



Dong-A University
Promotional Video



- Seunghak Campus** (49315) Nakdonggang-daero 550beon-gil, Saha-gu, Busan (Hadan-dong)
- Bumin Campus** (49236) 225 Gudeok-ro, Seo-gu, Busan (Bumin-dong 2-ga)
- Gudeok Campus** (49201) 32 Daesingongwon-ro, Seo-gu, Busan (Dongdaesin-dong 3-ga)

동아대학교 DONG-A UNIVERSITY

동아대학교

DONG-A UNIVERSITY



CONNECTING TALENT,
THE WORLD & FUTURE
WITH DONG-A'S HISTORY

CONNECT TO DONG-A





CONNECT TO

Connecting talent, the world and future

With Dong-A's history

DONG-A

Connecting talent, the world and future with Dong-A's history

Dong-A is moving beyond the region and opening toward the world with a 75-year-old tradition!
Dong-A values the education of versatile talents with good character.
Dong-A's world is a place of solid growth through relentless challenges.
Dong-A aims at becoming a place of world-class education continuously leaping forward in the future.
Dong-A University, which connects a strong alumni network, diverse worlds, and a trustworthy tomorrow, is heading towards a wider world, more talent, and a brighter future.

CONTENTS

DONG-A CONNECTS TALENT + VALUE

Talent with value

- 04 75-year-old history
- 07 Vision for 2021
- 10 President's Greetings
- 12 Dong-A's talent
- 16 Organizational Chart & Current Status

DONG-A CREATES WORLD + GROWTH

World & Growth

- 20 Campus
- 28 Dong-A University Hospital
- 30 Graduate School
- 32 Affiliated Institutions & Annexe Research Institutes

DONG-A LEAPS TOWARD THE FUTURE

Future & Jump

- 36 Employment Support System
- 38 Specialized Educational Programs
- 40 Social Contribution Activities
- 42 Scholarships
- 44 International Program
- 48 Dong-A as Perceived by the Media
- 50 Campus Map

TALENT WITH VALUE

DONG-A CONNECTS TALENT + VALUE

Since its foundation in 1946, Dong-A University has emerged as a prestigious private university after overcoming many internal and external hardships. In the era of the Fourth Industrial Revolution, humanity has faced a paradigm of great change. As the cradle of convergent and versatile talents equipped with competence and character in accordance with the changing times, Dong-A University adds value to talent.

DONG-A 75th Anniversary

A bright history of 75 years
Going beyond 80 years since its foundation
Marching forward firmly into
100 years in the future

1946 Record of sprouting >>



The university first opened in Sujeong-dong, Dong-gu under the name of Dong-A Haksuk.

1950 Historical Prelude >>

- 1951 Oct 5 Moved to Dongdaesin-dong
- 1958 Oct 1 Launched the Graduate School
- 1959 Feb 26 Accredited as a comprehensive university (4 colleges, 16 majors)
- 1966 Apr 6 The educational institution officially changed from Dong-A University to Dong-A Haksuk
- 1979 Apr 18 Relocation of the College of Engineering (Hadan-dong, Saha-gu) to the newly constructed Seunghak Campus



1980 Firm Establishment >>

- 1983 Sep 8 Establishment of the College of Arts
- 1986 Nov 6 Establishment of the College of Medicine
- 1990 Mar 26 Constructed and opened an affiliate hospital
- 1999 Feb 12 Constructed the Industry-Academy Cooperation Building



2002 Development and expansion >>

- 2002 Jun 19 Constructed the Hanrim Dormitory on Seunghak Campus
- 2004 Mar 16 Established the Industry-Academy Cooperation Foundation



Moving forward, >>
today and tomorrow

2021~

2015 Boldly Opening to the world >>

- 2015 Mar 1 Seunghak Campus College of Arts moved to newly established building
- 2015 Jul 1 Completion of the construction of the Seokdang Global House (International student dormitory)
- 2016 Feb 19 Constructed the Seunghak Hall 2 of Hanrim Dormitory at Seunghak Campus
- 2021 Feb 3 Approval for the temporary use of the Educational Building at Gudeok Campus
- 2021 Mar 1 Establishment of the College of International Studies and the School of Computer and AI



2006 Cradle for creative competence >>

- 2006 Feb 16 Approved for the establishment of The Graduate School of Medicine (2009)
- 2008 Sep 2 Approval for the establishment of The School of Law (largest among the regional private universities)
- 2012 Jun 26 Opened the Bumin Campus International Hall, completed construction of Bumin Campus
- 2012 July 10 Opened the Entrepreneur Hall on Seunghak Campus

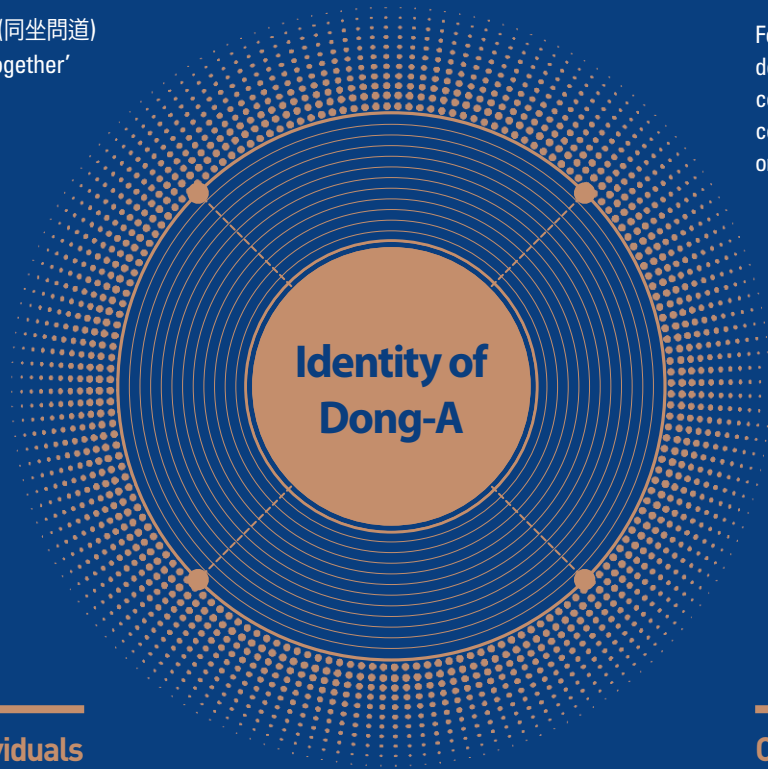


DONG-A

+ HUMAN RESOURCES WORLD & FUTURE

Educational Philosophy

Dong-jwa-mun-do (同坐問道)
'Inquiring the way together'



Talented individuals

Creative talents that take up
challenges and communicate

Founding philosophy

Fostering the dignity of
democratic citizens and
contributing widely to the
coexistence of mankind, based
on the Hongik-Ingan Philosophy

Core competency

Challenge, Glocal,
Communication, Character,
Creativity, Professionalism

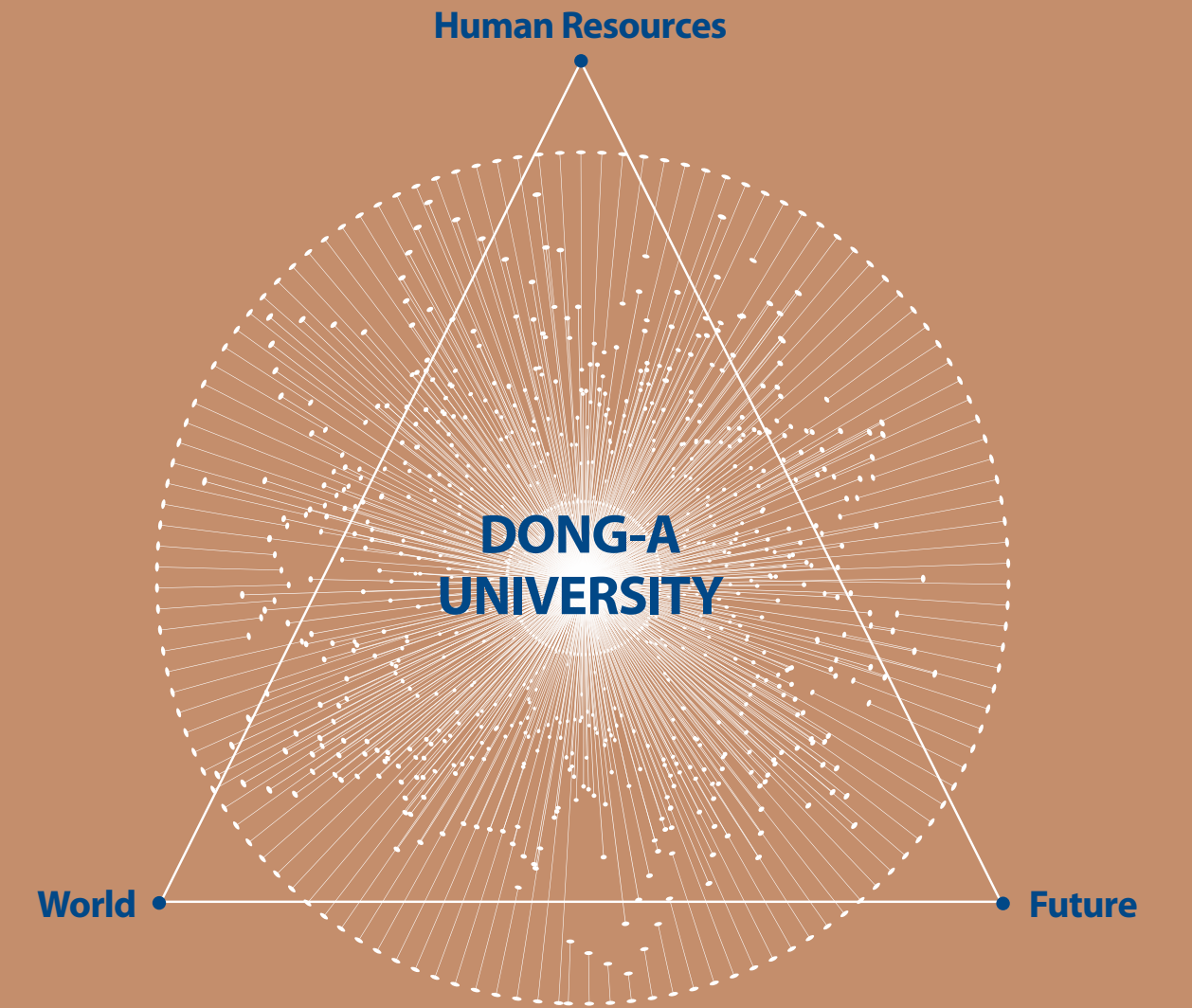
Quantum Leap 2024+

Prestigious private university that
embraces both the regional and
the international



Establishing and spreading
Dong-A's innovative brand
through differentiation and
specialization

Education, Research,
Industry-Academy
Cooperation, Management
and Glocal



DONG-A 2021, CONNECTING TALENT, THE WORLD AND FUTURE

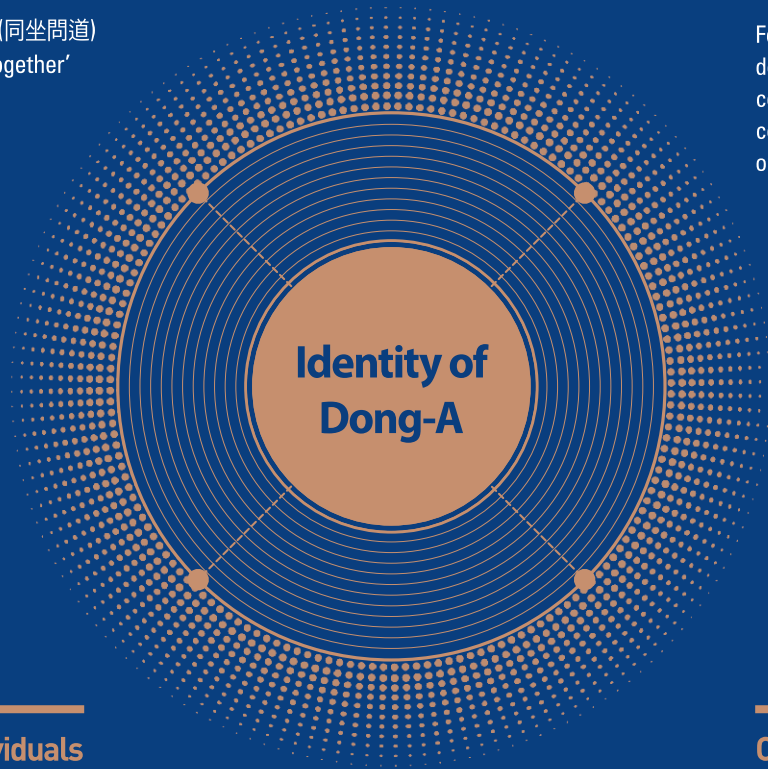
Dong-A's perspective and choice is special. The 'creativity' that Dong-A pursues is not a brilliant imagination that creates something completely new. It is the ability to devise and create something original by combining and expanding existing information and methods in different ways. In the era of the Fourth Industrial Revolution, at a time when the fostering of creative versatile talent is a topic much talked about, Dong-A University has established itself as a cradle for versatile talent. The efforts put in by Dong-A University have paid off.

DONG-A

+ HUMAN RESOURCES WORLD & FUTURE

Educational Philosophy

Dong-jwa-mun-do (同坐問道)
'Inquiring the way together'



Talented individuals

Creative talents that take up challenges and communicate

Founding philosophy

Fostering the dignity of democratic citizens and contributing widely to the coexistence of mankind, based on the Hongik-Ingan Philosophy

Core competency

Challenge, Glocal, Communication, Character, Creativity, Professionalism

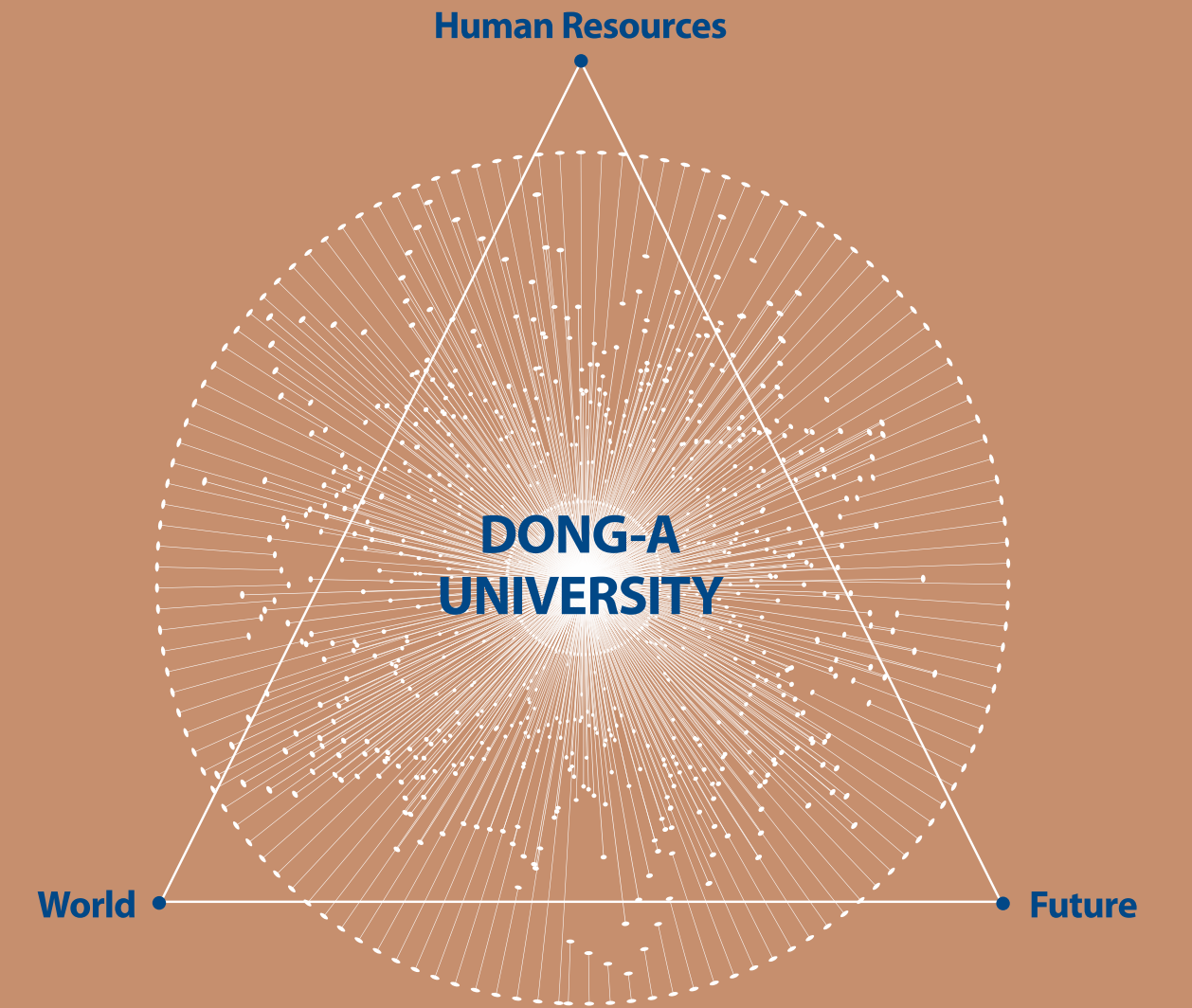
Quantum Leap 2024+

Prestigious private university that embraces both the regional and the international



Establishing and spreading Dong-A's innovative brand through differentiation and specialization

Education, Research, Industry-Academy Cooperation, Management and Glocal



DONG-A 2021, CONNECTING TALENT, THE WORLD AND FUTURE

Dong-A's perspective and choice is special. The 'creativity' that Dong-A pursues is not a brilliant imagination that creates something completely new. It is the ability to devise and create something original by combining and expanding existing information and methods in different ways. In the era of the Fourth Industrial Revolution, at a time when the fostering of creative versatile talent is a topic much talked about, Dong-A University has established itself as a cradle for versatile talent. The efforts put in by Dong-A University have paid off.

The leader of change for the future

Dong-A University creates your history



DONG-A, WHERE WE MAKE YOUR HISTORY

Since its foundation in 1946, Dong-A University is the representative private school of the region which has strived to nurture the talents who can move forward together with the events of Korean modern history and lead the nation.

Based on Seokdang Jung Jae-hwan's educational philosophy 'Dong-Jwa-Moon-Do' (which means teacher and pupils sitting down and discussing knowledge together), Dong-A University has undertaken and developed various innovative research and teaching.

Each of the 230,000 alumni, who are thriving throughout society in such fields as politics, business, law, culture and sports, acts as the face of Dong-A.

With the Fourth Industrial Revolution and the era of the new normal around the corner, Dong-A University is once again at the forefront of change for the future.

Our university has been selected by the government as 'Innovative Leading University of the Fourth Industrial Revolution', 'Autonomous Improvement University via the University General Competency Diagnosis', 'Leading University for Customized Social Industry-Academy Cooperation (LINC+)', 'BK21 Project', and also as the university that operates the 'Green Convergence Technology Talent Nurturing Specialized Graduate School'. Thus, we can be considered as the leader in producing the future comprehensive talents.

Through educational innovation that surpasses the existing boundaries and limits, we will introduce a micro-module system and comprehensive majors based on social demand and are also setting up futuristic infrastructure such as hybrid-type automatic recording lecture rooms, drone hub centers and cloud innovative centers.

'Prestigious private university that embraces the local region and meets the world' going beyond the 80 years since its foundation, Dong-A University is moving towards 100 years in the future to take a leap forward to a greater degree and intends to 'write history one page at a time' with everyone.

We would appreciate your support.

Thank you.

President of Dong-A University **Lee Hae-woo**

The new normal era,
 We have 230,000 alumni who are active on the global stage

TOTAL NUMBER OF
 DONG-A UNIVERSITY ALUMNI

DONG-A **230,000**

Numerous Dong-A graduates join in creating a world full of creativity, justice, challenge and passion. 230,000 Dong-A alumni from all walks of life around the world have worked together for the development of Korea.

The powerful alumni network is the pride and driving force of Dong-A University. Meet the brilliant alumni who have realized the dream which began at Dong-A University.

WORLD CLASS + DONG-A PEOPLE



Cho Moo-jeh

Graduated from the Department of Legal Studies

A warrior of integrity + impartiality
 A quiet judicial revolutionist

- Current distinguished professor at the Dong-A University School of Law
- Former Supreme Court justice
- Former head of the Busan Court Coordination Center

Park Kwan-yong

Graduated from the Department of Political Science and Diplomacy

A thorough man of the parliament, the first House Speaker among all alumni

- Current Chairman of the 21st Century National Development Institute
- The 16th House Speaker of the National Assembly

Kim Doo-kwan

Graduated from the Department of Political Science and Diplomacy

Minister who was formerly a village head, a leader in breaking down regionalism

- Current member of the National Assembly
- The 5th Minister of Government Administration and Home Affairs
- The 34th Governor of Gyeongsangnam-do Province

Kang Byung-joong

Graduated from the Department of Legal Studies

'Tire Gang', a living myth of success created through brand new technology

- Current CEO of NEXEN Group
- Current Chairman of KNN
- The 15th to 17th President of the Busan Chamber of Commerce and Industry

Shin jung-taek

Graduated from the Department of Business Administration

A Leader in regional development
 A self-made CEO

- Current CEO of Seun Steel
- Current CEO of the Busan Community Chest of Korea
- The 19th and 20th President of the Busan Chamber of Commerce and Industry

Yang Jung-mo

Graduated from the Department of Physical Education

South Korea's first Olympic gold medalist

- Current CEO of the Hope Tree Community
- Gold medalist in free-style wrestling for 62-kg at the Montreal Olympics
- Gold medalist in freestyle wrestling for featherweight at Bangkok Asian Games

Nam Yeong-shin

Graduated from the Department of Education

First Army Chief of Staff from the ROTC, in the 72 years since the founding of the Army

- Current Army Chief of Staff
- Former Commander of the Ground Operations Command of the Army
- Former Commander of the Military Security Assistance Command

Kwak Sin-ae

Graduated from the Department of Korean Language and Literature

First Asian woman to win an Academy Award for Best Picture

- Current CEO of Barunson E&A
- Won the Best Picture Award at the 92nd Academy Awards in 2020 (Parasite)
- Won the Best Producer Award in the 20th Annual Women In Film of the Year Awards in 2019 (Parasite)

Dong-A, the beginning and end of differentiated competitiveness

Outstanding research competency and shining accomplishment

DONG-A

+ HUMAN RESOURCES

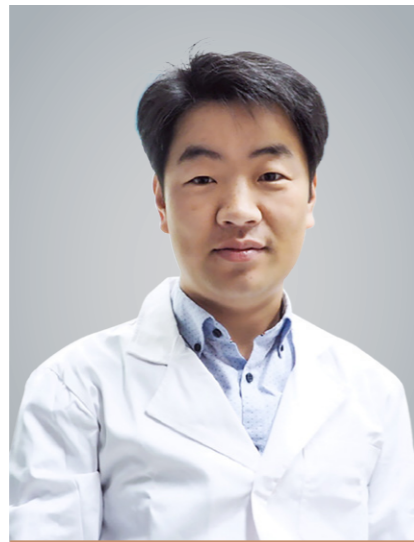


Lee Seon-woo

Professor at the Department of Applied Biology

Published in Nature Biotechnology, Selected as University Focus Research Institute by the Ministry of Education

In 1999, Professor Lee Seon-woo received the American Society for Microbiology's Excellent Paper Presentation Award, the Korea Science and Technology Organization's Science and Technology Excellent Paper Award in 2008, the Young Plant Pathologist Award of the Korea Plant Pathology Society in 2012 and was selected for the Rural Development Office's 'Woo Jangchun Project' in 2015. Furthermore, his paper, published in "Nature Biotechnology", was the first one to reveal the cluster structure and function of "bodyguard microorganisms" around plants that are resistant to disease.

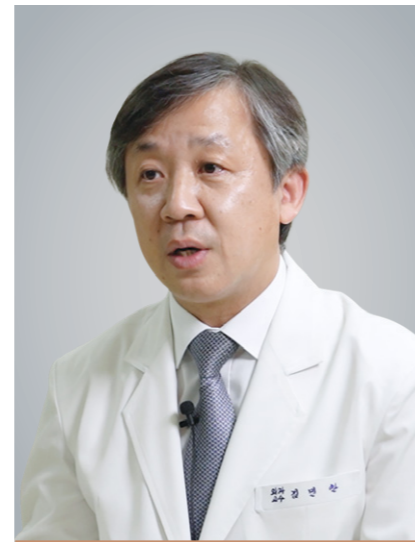


Cho Wan-seob

Professor at the Department of Pharmaceutical Life Engineering

Won the Minister of Science and ICT Award in 2020

Professor Cho Wan-seob not only achieved outstanding research achievements with the discovery of physicochemical properties that affect the toxicity of nanomaterials, but he is also the project leader of the ISO International Division of Standards in Nanotechnology (ISO TC229/WG3) and is currently working on the development of international standards. He has been a professor at Dong-A University since 2012 and serves as a vice chairman of the planning committee and is an academic council member of the Korean Toxicity Society, as well as the academic secretary of the Korean Toxic Pathology Association.



Kim Min-chan

Professor at the Department of Medicine

Korea's top doctor in the laparoscopy field

Professor Kim Min-chan has conducted 3,800 stomach cancer surgeries since 2002 and was the first to publish a paper on laparoscopic gastric cancer in 2005. He won the Best Researcher of the Korean Gastric Cancer Association in 2015 and the Excellent Video Award from International Association of Gastric Cancer in 2017. Following these, he published a paper comparing the survival rate of laparoscopic and open surgery in early stomach and progressive stomach cancer in the American Cancer Society Journal and the Journal of Surgery in 2019.



Kim Oh-yeon

Professor at the Department of Food Science and Nutrition

Won Seokdang Academic Award in 2020

Since 2018, Professor Kim Oh-yeon has contributed to the selection of the best business group in September 2020 by serving as the head of Brain Busan 21+ business group (aging-friendly bio-material business group). Over the past five years, Professor Kim has published 28 SCI(E)-level papers (13 papers in the top 25% (Q1) of the JCR ranking and 2 papers in the top 7%). In 2018, she received the National Health Management Project Development Contribution Award from National Health Insurance Service and the Academic Progress Award from Korean Society of Clinical Nutrition. In 2019, she received the Parametric Aesthetics Award from the Korean Society for Community Nutrition.



Park Hwan-tae

Professor at the Department of Pre-Medicine

Peripheral Neuropathy Research Center selected as MRC

Dong-A University's Peripheral Neuropathy Research Center, which was selected in the field of general medicinal science for the leading research center support project (Medical Research Center, MRC) in 2016, will receive 6.7 billion won in research funds and 4 billion won in subsidies from the government, local governments and pharmaceutical companies for seven years until 2023. The center will strive hard to be reborn as a world-class research institute that actively solves peripheral neuropathy, a difficult task for humanity, by connecting with Dong-A University Hospital and cooperating with world-class institutions.



Kwon Myoung-a

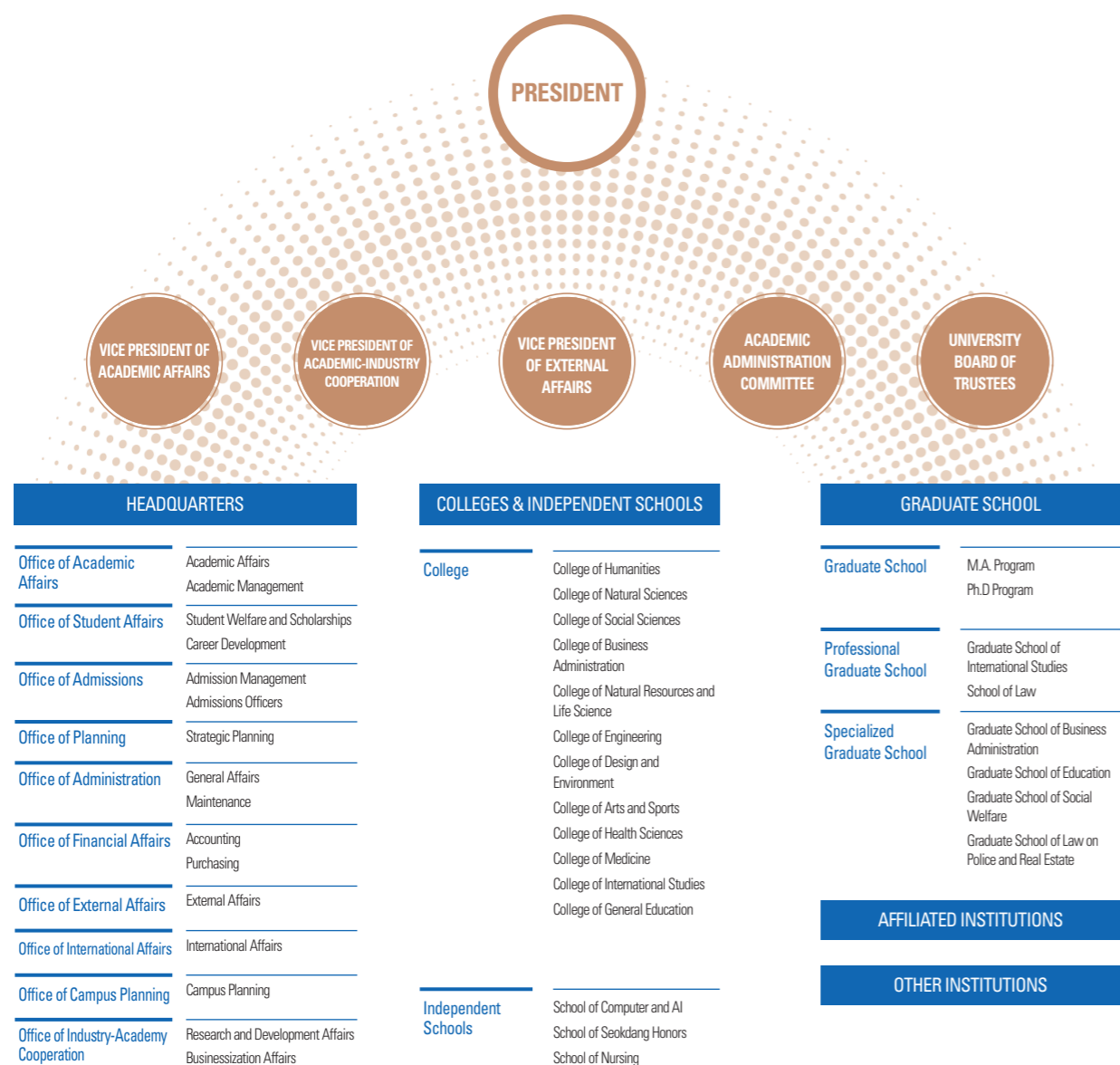
Professor at the Department of Korean Language and Literature

Humanities and Social Studies Institute selected for supported project

In 2019, it was selected as a project to support the Ministry of Education's Humanities and Social Research Institute under the theme of 'Connected Body Theory and Gender Effect Research', and was thus promised to receive 1.2 billion won for six years. By combining research methods for affection and gender, the Research Institute of Gender, Affect attempts to transform the human paradigm of perceiving life, death, disease, disability, minorities, and posthumans. Researchers from various fields, including classical studies, modern literature, social welfare, disability studies, film, cultural research, aesthetics, science, and technology, are actively building overseas networks.

Organizational Chart

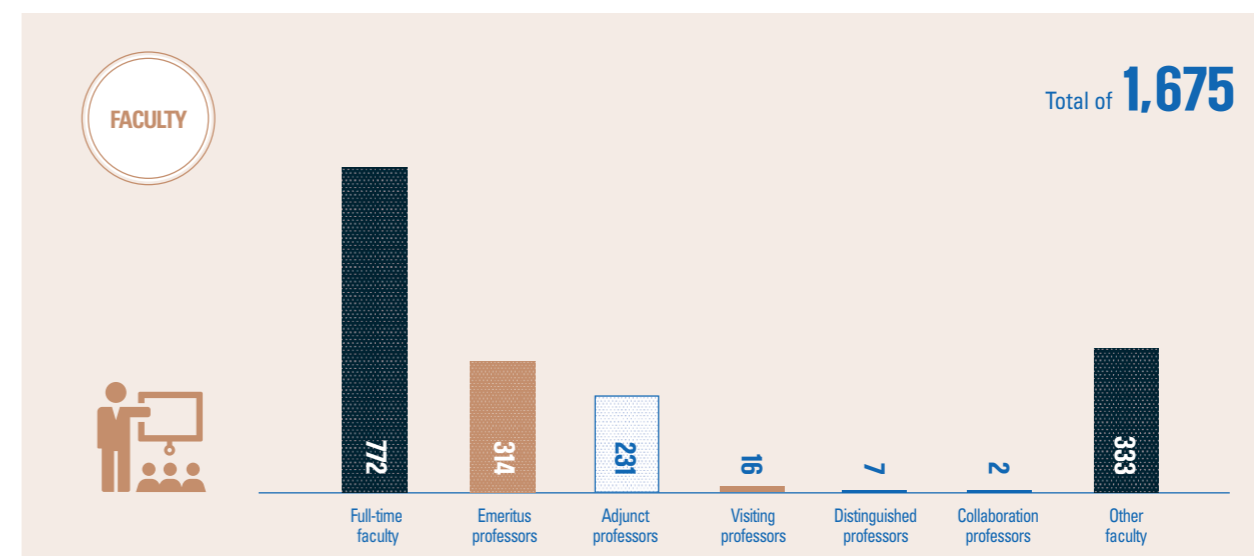
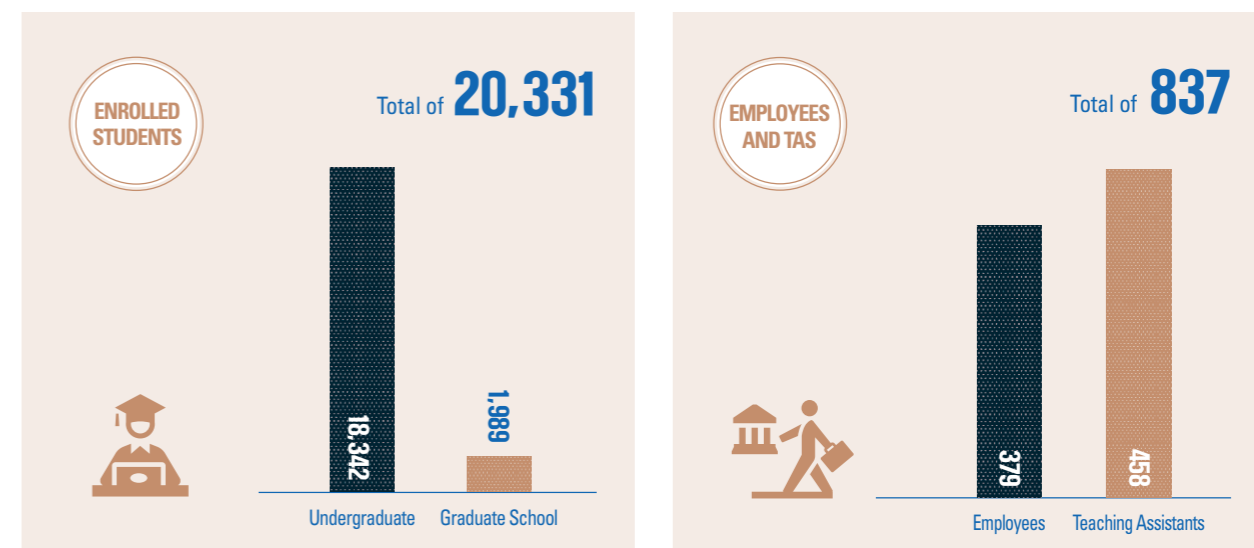
DONG-A ORGANIZATION



Current Student Report

(Based on April 1, 2020)

NUMBERS OF STUDENTS, FACULTY & STAFF



CONNECT WORLD



+ GROWTH

DONG-A CONNECTS WORLD + GROWTH

The glowing strength that illuminates the world, Dong-A University, the proud name that awakens the world. Dong-A's world is a place where various knowledge live and freely interact with each other.

It is full of creativity and creative thinking of 21st-century talents who will open a greater future without national and academic boundaries.

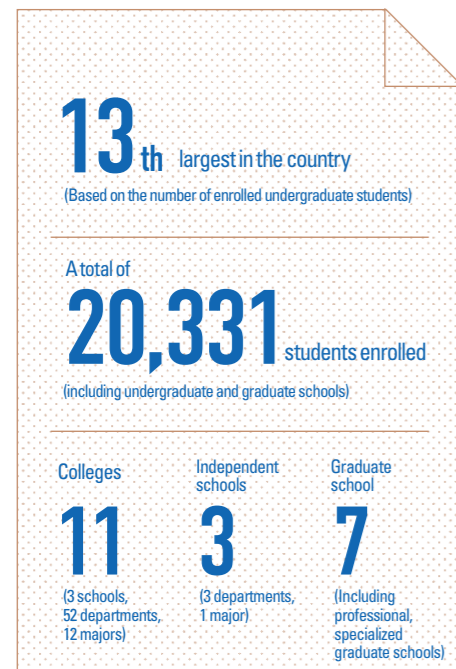
Dong-A's world has continued to grow ceaselessly.

The futuristic multi-campus, Dong-A

which has a more beautiful path ahead than the one taken so far

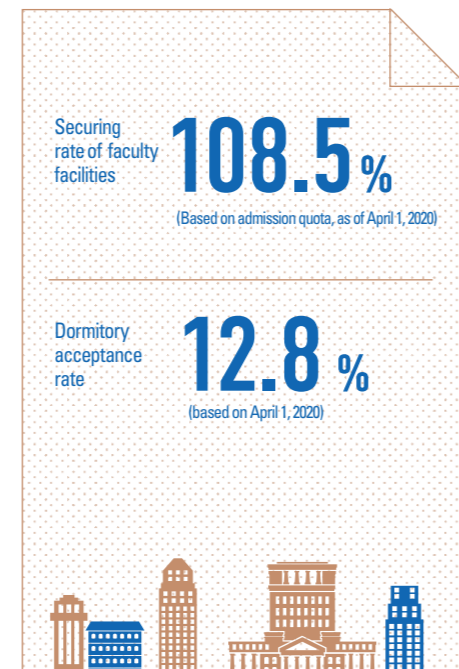
Dong-A University's 75-year-old history of cultivating cultural and intellectual individuals, who will enrich the world and talents with an open perspective and the wisdom of co-prosperity, has proved that education is the hope of the future. We have provided the best educational environment for students to concentrate on their studies and broaden their international perspectives. The historic Dong-A University is the cradle of national competitiveness. Each campus which is centered on research, international exchange, and medicine is the stage of Dong-A's passion, creativity, and dreams.

Dong-A University's main campus can boast of its scale at the national level.
The 13th largest in the country

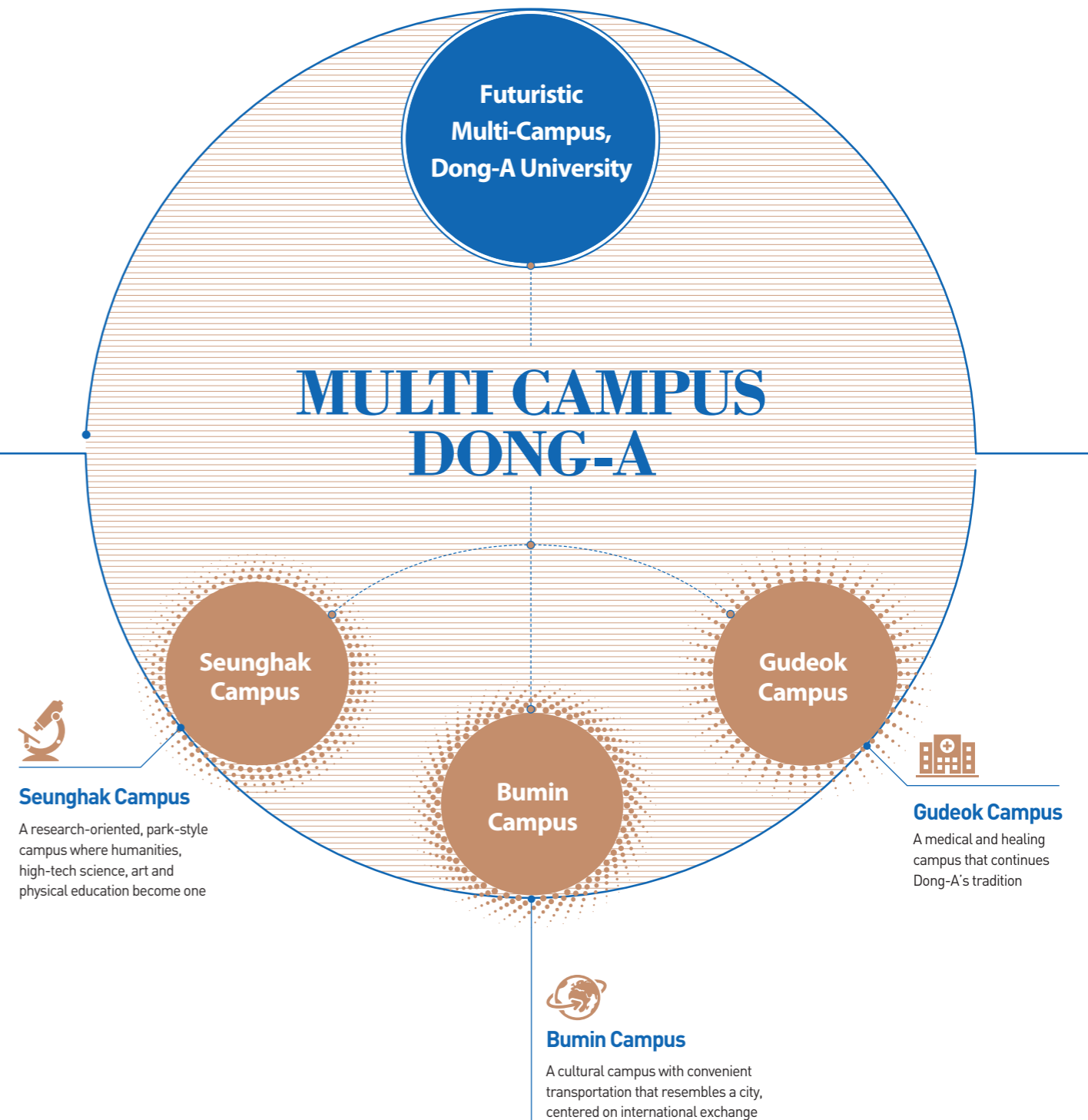


Continuous improvement of the educational environment through a step-by-step campus development project

(Source of data: University notification disclosure data)



Dong-A University has three campuses that are specialized in research, international exchange, and medicine.





Seunghak Campus, which has a large park-style site and beautiful view on Nakdonggang River facing Eulsukdo Island

It is a research-oriented, park-style campus where humanities, advanced science, art and physical education become one. The campus represents Dong-A with its outstanding scenery and beauty.



SEUNGHAK CAMPUS

College of Humanities

Department of Philosophy and Medical Ethics, School of History and Culture (History, Archaeology and Art History majors), Department of Korean Language and Literature, Department of Education, Department of Children Studies

College of Natural Sciences

Department of Information and Mathematics, Department of Semiconductor, Department of Chemistry, Department of Biological Science

College of Natural Resources and Life Science

Department of Molecular Genetic Engineering, Department of Applied Biology, Department of Biotechnology, Department of Life Resource Industry Studies

College of Engineering

Department of Architectural Engineering, Department of Civil Engineering, Department of Environmental and Energy Engineering (Future Energy Engineering major, Environmental Safety major), Department of Electrical Engineering, Department of Electronics Engineering, Department of Industry and Management Systems Engineering, Department of Naval Architecture and Offshore Engineering, Department of Chemical Engineering, Department of Material science and Engineering

College of Design and Environment

Department of Architecture (5-year curriculum), Department of Fashion Design, Department of Urban Planning Engineering, Department of Landscape Architecture, Department of Industrial Design

College of Arts and Sports

Department of Arts, Department of Crafts, Department of Music, Department of Physical Education, Department of Taekwondo

College of Health Sciences

Department of Food Science and Nutrition, Department of Pharmaceutical Life Engineering, Department of Health Management

School of Computer and AI

Department of Computer Engineering, Department of AI

BUMIN CAMPUS

Culturally-oriented Bumin Campus centered on international exchanges that has convenient transportation in downtown Busan.



Bumin Campus, which was completed in 2012, is an urban cultural campus specialized in international exchanges. The General Lecture Building (twin buildings), the symbol of Bumin Campus with outstanding scenery and beautiful landscape, won a silver prize at the "Architectural Beauty Contest" hosted by Busan City in 2008.

College of Social Sciences

School of Political Science · Sociology (Politics and Diplomacy major, Sociology major), Department of Public Administration, Department of Social Welfare, Department of Media Communication, Department of Economics, Department of Police · Firefighting

School of Seokdang Honors

Public Policy major

College of Business Administration

Department of Business Administration, Department of Tourism Management, Department of International Trade, Department of Management Information Systems, Department of Finance, Department of Integrated Business Management, Department of Intellectual Service Management

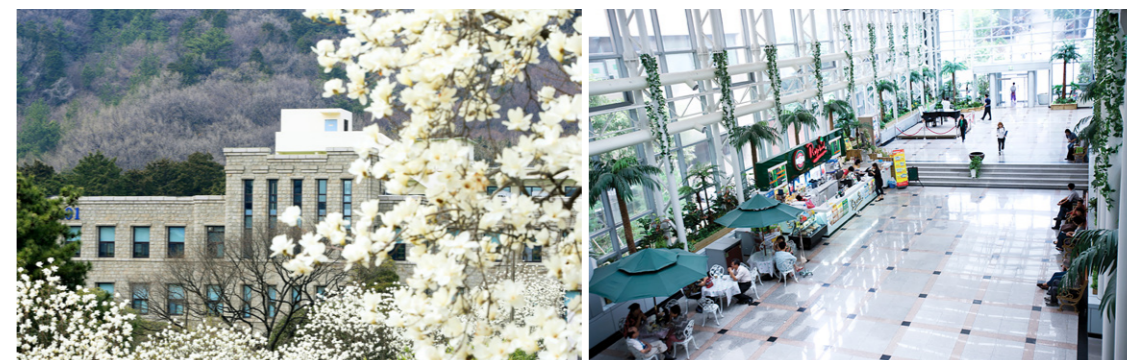
College of International Studies

Department of Global Business, Department of British and American Studies, Department of Chinese Studies, Department of Japanese Studies



General Lecture Building at Bumin Campus
Hosted by Busan in 2008
A silver prize at the
"ARCHITECTURAL BEAUTY CONTEST"

GUDEOK CAMPUS



Medical and healing-type Gudeok Campus that continues Dong-A's tradition

Dong-A University Hospital, where medical students can experience and study in person, is located in Gudeok Campus, a space where they can freely develop their imagination. It is a soothing and healing-type medical campus that heals the human body and mind.

College of Medicine

Department of Pre-medicine, Department of Medicine

School of Nursing

Department of Nursing

since **1946**

Gudeok Campus, which was established at the founding of the university, boasts the longest history and tradition.





The only cardiovascular and cerebrovascular disease treatment center in the Busan-Ulsan region, where the power of medical expertise and virtue of human art coexist

Dong-A University Hospital

Dong-A University Hospital was designated by the Ministry of Health and Welfare for about 10 government health policy support projects, including the Cardiovascular Disease Center in the Busan region, Busan's only regional Emergency Medical Center, Busan Metropolitan Dementia Center, Newborn Treatment Regional Center, Busan Disabled Health Center, and cord blood bank in the Busan-Gyeongnam region. Through exemplary execution of projects, Dong-A Hospital is making great contributions to government policies, preventing and treating diseases and aiding local residents to lead healthy and happy lives.

Dong-A University shares the latest medical information and medical technology through MOU with prestigious university hospitals in Korea and abroad, including Chicago University Hospital, Moscow National University Hospital, and Samsung Seoul Hospital. We have also opened telemedicine centers in Almaty and Vietnam to greatly contribute to the internationalization and the improvement of human health care by attracting foreign patients. The hospital remodeling, which has been undergoing for five years, will be completed in mid-2021, along with the opening of the special ward and the central building. Thus, establishing a more pleasant and high-quality hospital infrastructure and become one of the best hospitals in Korea.

Ranked 1st place in the Busan, Ulsan and Gyeongnam region for the 2nd Patient Experience Appropriateness Evaluation by the Health Insurance Review and Evaluation Committee of the Ministry of Health and Welfare



HISTORY

- 2015** The Department of Diagnostic Medicine obtained certification for Excellent Testing Laboratory five times in a row from the U.S. Laboratory of the College of American Pathologists (CAP)
Accredited by the Busan Metropolitan Government as Leading Strategic Company (Bio Health Industry Field)
- 2016** Signed an MOU with Moscow's First National Medical University and Hospital Division
Signed an MOU with the University of Chicago and the University of Chicago Medical School
- 2017** Opened the special ward (12 floors, 44 patient rooms, 3 wards)
- 2018** Regional Cardiovascular and Cerebrovascular Disease Center obtained the highest score in Korea during the performance evaluation conducted by the Ministry of Health and Welfare
- 2019** Accredited as a top-tier general hospital medical center for the third cycle of the medical institution evaluation by the Ministry of Health and Welfare
Opened Telemedicine Center in Almaty, Kazakhstan
- 2020** Opening of the Disabled Health Care Center in Busan
Selected as telemedicine pilot project for rehabilitation patients by the Ministry of Health and Welfare
- 2021** Designated as the only cutting-edge rehabilitation medical institution in the Busan area (Yeongnam area) by the Ministry of Health and Welfare



Leading the Era of the Fourth Industrial Revolution in the 21st Century

A free and creative academic research site

The Graduate school is a place where learning and knowledge converge. The competency formed in this place develops into a core talent who will pioneer the future of Korea. Dong-A University Graduate School develops academic theories, expansive application methods, and creative exploration skills in each field to foster talents who will be in charge of the development of the world.

GRADUATE SCHOOL



5 categories

67 departments in operation

NUMBER OF LAWYERS PRODUCED BY THE DONG-A LAW SCHOOL



Over **400**



GRADUATE SCHOOL



Established in 1958, Dong-A University Graduate School continuously develops and promotes integrated education and research programs to nurture talented individuals that will take on central roles in the modern knowledge information society. Dong-A University Graduate School currently operates 67 departments in five categories and has produced more than 3,000 doctors and 9,000 masters so far.

GRADUATE SCHOOL OF INTERNATIONAL STUDIES



To foster people who play a leading role in international trade, we focus on practice-oriented education and help them understand politics, economy, society, and culture.

SCHOOL OF LAW



Dong-A University's Law School, which has produced legal professionals trusted by the people, has trained global professional lawyers based on a long tradition. Since its opening in 2009, more than 400 lawyers have been produced so far, faithfully serving as the backbone of the country and society. In addition, professional lawyers with professional knowledge and international sensibilities are working all over the world by specializing in international trade laws.

GRADUATE SCHOOL OF BUSINESS ADMINISTRATION



By researching and studying new theories and techniques on corporate management, including basic theories and practices in business management, students will be able to strengthen the competitiveness of companies. Currently, there are 9 majors and the Top Manager curriculum for the master's degree at the Graduate School of Business Administration.

GRADUATE SCHOOL OF EDUCATION



The school's objective is to train school teachers who will focus on improving the educational environment by teaching academic theories about education and utilizing their application skills. In particular, by opening night classes, the graduate school provides ongoing research opportunities for current teachers in Busan and Gyeongnam regions, opening the possibility of self-development as educators.

GRADUATE SCHOOL OF SOCIAL WELFARE



This is a Specialized Graduate School that fosters talented people who can lead the welfare development of Korea and local communities in response to Korea's political ideology that emphasizes welfare society in an aging era. After graduating from the graduate school through a solid curriculum on welfare theory and practice, all students will be qualified as second-class welfare workers and are trained to be equipped with academic and practical skills.

GRADUATE SCHOOL OF LAW ON POLICE AND REAL ESTATE



In order to foster outstanding professionals in the criminal and legal fields, we systematically research and teach established theories and applications in the police and other legal fields. We strive to foster special legal experts who combine expertise and practical skills.

GRADUATE SCHOOL



Studying academics with depth,
doing art with inspiration

Enriching life, vital life zone



Dong-A University, which has adopted the latest educational practices, established search facilities and cultural facilities for local residents to lead the global era, has continued to make endless efforts to provide conveniences until it becomes a place where dreams come to reality. We are also carrying out university specialization projects through continuous investment in education and research infrastructure. It has established with various fields such as humanities, social studies, science, art, medicine, etc. to foster professional talent.

Seokdang Museum has the greatest number of cultural assets collections and boasts of the highest level of college museum in Korea

A collection of over

30,000 pieces



AFFILIATED INSTITUTIONS



14

ANNEXE RESEARCH INSTITUTES



34

AFFILIATED INSTITUTIONS

Seokdang Museum

Seokdang Museum, which opened in 1959, is the first museum in Busan. It has the largest number of cultural assets among Korean universities and has established itself as a representative tourist attraction in Busan, with 70,000 visitors annually. In 2017, the Busan City Council applied for the Seokdang Museum building to be on the provisional list of UNESCO World Heritage Sites, recognizing its value as a global cultural heritage.

Library

Dong-A University has large-scale libraries in Seunghak, Bumin, and Gudeok Campuses and at the Law School and Medical School Library Annexes. These facilities have over 4,800 seats, over 1.3 million books, and over 730 types of serial publications published at home and abroad and 68,000 pieces of non-book materials.

Information Processing Center

It was established in 1981 so that professors can research and practice education, as well as for computerizing academic administration. It operates the entire administration of the school online through a comprehensive information system. Seunghak, Boomin, and Gudeok Campuses have about 900 PCs in total in 14 education rooms and also support lectures and free practice.

Language Education Center

Various contents and programs related to language education are established to help foreign students study and help local residents improve their language skills.

Seokdang Art Museum

Seokdang Art Museum, located at Boomin Campus, is the 6th official art museum in Busan and has become the center of local art. It is a space where local people can enjoy culture and art through active exhibition activities.

Seokdang Academy

Established in 1960, Seokdang Academy has been translating important classics such as 'Goryeosa' and 'Seohajib' and continuously publishing 'Seokdang Academy Series' to cumulate its research capabilities.

Hallim Dormitory

We provide the best environment for freshmen and students from abroad to study. It is spread throughout each campus as Seunghak Hall, Bumin Hall, and Gudeok Hall. Seunghak Hall 2 was completed in 2016 and is equipped with facilities that can accommodate a total of 2,175 students.

DAU Media Center

Founded in 1948, Dong-A University's university newsletter committee, broadcasting station, and English newspaper committee were merged to become DAU Media Center. It is divided into the University Newsletter Editorial Division and the Broadcasting Division, which provide in-depth reports on various issues in the university and quickly delivers important news to students.

Health Care Center

Health Care Center is in charge of the health care of students and staff, early detection of diseases, environmental hygiene and other health improvements in schools.

Life-long Education Center

Opened in 1993, the Life-long Education Center operates a credit banking system, a general course, and a CEO Academy to foster talents with creative leadership required by future society.

Dong-A University Confucius Academy

Confucius Institute is a non-profit educational organization established and operated by the China's National Hanban Confucius Institute Association to introduce Chinese language and culture to the world. China's Hanban is carrying out various activities to broaden the world's understanding of Chinese language and culture.

Seokdang Global House

Seokdang Global House provides various convenience facilities such as a dormitory and Korean language classrooms that can accommodate about 210 foreign students so that they can adapt to school life more easily and conveniently and focus on academic exploration.

Global Zone

Global Zone, a space for multinational cultural exchanges, offers opportunities for students to learn languages naturally by interacting with international students and native instructors from all over the world.

Student Consultation Center

Student Consultation Center is a counseling center established so that students can share various concerns experienced during their college years. We operate psychology, career, life, and sexual violence counseling rooms.

ANNEXE RESEARCH INSTITUTES

- The Institute of ASEAN Studies
- Medical Science Research Center
- Environment Research Center
- Business Research Center
- The Sports Science Research Institute
- Basic Science Research Institute
- Institute for Legal Research
- University Core Research Center for Disaster-free and Safe Ocean City Construction
- The Research Institute of Ocean Resources
- The Research Institute for Tourism and Leisure
- Industrial Technology Research Center
- Human Ecology Research Institute
- The Institute of Agricultural Life Sciences
- The Research Institute of Information Technology
- The Research Institute of Bio-Health Convergence
- The Research Institute of International Trade
- Institute of Marx Engels Studies
- The Research Institute of Convergence Design
- The Research Institute of Taekwondo and Health Culture
- The Research Institute of Bio-Food Industrialization
- The Entrepreneurship Research Institute
- The Research Institute of Energy Environment Application Technology
- The Research Institute Global Finance
- The Research Institute of Humanities
- The Research Institute of Life and Medical Ethics
- The Research Institute of Global Disaster and Safety
- The Research Institute of Vessel and Ocean Systems
- The Research Institute of Emergency Response Technology Policy
- The Research Institute of Gender and Affect
- The Research Institute of Multiculturalism
- The Research Institute of Formation Culture and Arts
- The Research Institute of Historical Humanities Image
- The Research Institute of Anti-Virus Pharmaceuticals
- Anti-cancer Immunity Research Center

CONNECT FUTURE



+ JUMP

DONG-A CONNECTS TOWARD THE FUTURE

We experience the widest stage and have the most opportunities.
We learn objective reasoning with overwhelming passion, romance,
and intense thinking.

Dong-A University students are equipped with solid skills here and
create their own future.

Dong-A! The meaning held by these two letters is endless.

Pride, courage, challenge, solidarity, love...

Each person's starting point for the future,

And the leap from Dong-A to your future begins.

Unrivaled employment support system Flying upwards! Dong-A students



JOB SUPPORT PROGRAM

Various employment support Program/competency assessment
Selected as the best and outstanding university



- Selected as an outstanding case of 'employment career guidance and counseling' in the 1st cycle of certification evaluation of university institutions
- Evaluated for university basic competency diagnosis in the 2nd cycle
 - > Selected as 'Best among universities in the Southeastern Region' in terms of employment and start-up counseling and career counseling
 - > Selected as 'Outstanding university in the Southeastern Region' in the employment and start-up employment support category
- Won the Best Award in the 2019 Busan Specialized Program Workshop for Job and Start-ups
- Selected as an excellent innovation case in the 'Industry-Academy Regional Cooperation' section of the National Forum for University Innovation Support Projects in 2019

More than **1,800**

Largest scale in Korea (1,800 people per year)
Alumni working in corporations participated in the students' training

SELECTED AS 'BEST UNIVERSITY IN SOUTHEASTERN REGION'

Selected as "Best University Among the Southeastern Region Universities" in the 2018 Basic Competency Assessment in the Start-up Consultation and Career Counseling section

No. 1 in Korea, the largest scale nationwide, and long-term operation of employment clubs on a yearly for 18 years in a row

- Operation of career clubs: established and operated by the university (Operated with a professor for each club)
- Maximum number of participants nationwide: 21.7% (960 students) out of the 4,415 senior students who participated
- As of 2021, more than 50 universities nationwide, including universities in the Seoul metropolitan area, visited Dong-A University for benchmarking.
- Ranks first place in the student support (career clubs) and employment information provision section in the Dong-a Ilbo's 50 Youth Dream Universities Evaluation
- Announced as the best example of 2019 by the National Council of Employment Managers
- Reported on the front page of the national newspaper as an outstanding case of overseas college career club in 2020

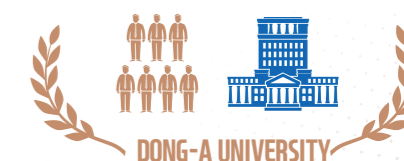
Customized employment education/consultation on a yearly basis, developed by university

- Operation motto of Career Development Division
 - > BTS: BETTER THAN STUDENTS
- Conducting employment counseling and guidance training once or twice a month
 - > Analyzing employment program status and operations
 - > Analyzing latest job information and job process - sharing know-how with alumni who are employed
 - Developing and operating program staff that benefits university conditions
- BTS operation cases were reported by 12 newspapers, including the Korea Economic Daily



BTS

(BTS: BETTER THAN STUDENTS)



No. 1

Ranked No. 1 in Student Support (career club) among 50 universities in the Dong-A Ilbo's Youth Dream University Evaluation

The nation's largest scale (1,800 per year) of alumni working in corporations participated in the students' training

Establishment of a cyclical employment education system in which seniors who graduated from employment programs participate in junior education again

1 Re-participation in job / interview training

- Over 1,000 alumni who had been employed through employment programs have participated in the students' education again annually.
- Providing job training, interview training [simple interviews], and latest corporate information
- 5,500 students per year receive benefits, showing a high satisfaction rate (95-99%)

2 Re-participation in the Employment Education Fund - the only case in Korea

- More than 1,200 alumni program management funds contributed to employment program budget
- A regular donation of 10,000 to 20,000 won per month, 610 million won accumulated.
- Employment infrastructure established and re-used as program operating funds
 - ※ The first real-time online employment mentoring platform for universities was established and operated in 2019 [As of 2020, 3,200 participants]
 - ※ Ranked fifth in the field of information provision for alumni by Dong-A Ilbo in 2015
- Won the grand prize at the 2019 Busan Job & Start-up Specialized Project Presentation Contest

BEYOND Educational Innovation that nurtures the versatile talents who evolve on their own

Dong-A University has been practicing qualitative changes in future education following the Fourth Industrial Revolution, along with exploring learning and fostering talent to lead the future. We introduce a bold comprehensive training approach and realize a BEYOND educational innovation model designed to support students' customized education.



- Strengthening competency to characterize the future academic structures
- Establishment and expansion of a double-major system for micromodule selection
- D-EPI based on social competencies to foster future talent
- Innovating mass-customization educational support
- Establishment of a student-centered total care system



CONVERGENT MAJOR

INDOOR SPATIAL DESIGN

Indoor Spatial Design is a field of study that fosters talent in professional design based on a functional understanding of the characteristics of space for the purpose of creating and regenerating all daily living spaces and environment such as residential, commercial, and public spaces.

SMART HEALTH CARE

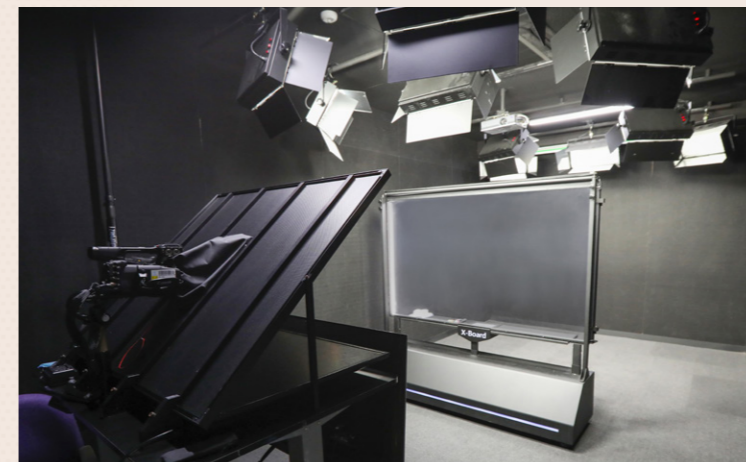
It combines the head department (Department of Management Information Systems) and three participating departments (Department of Food Science and Nutrition, Department of Pharmaceutical Life Engineering, Department of Health Management) to analyze various healthcare data and design optimized services for users and foster smart healthcare practitioners.

SELF-DESIGNED COMBINED MAJOR

Self-directed learning is a flexible major in which students interpedently set up their own career paths and design and complete curriculum accordingly to guarantee various learning opportunities and foster creative talent, so that students can design a curriculum that meets their career plans and educational purposes.

MICRO-MODULE SYSTEM

Micro-module refers to a set of minimum units of curriculum to support a particular career advancement within a department (major). In the department, students can set modules for each field of entry and select modules in the field of interest to systematically take required courses and obtain certificates.



CREATIVE HUMANITIES MANAGEMENT

COMBINED MAJOR

Based on the understanding of humanities knowledge, we aim to foster comprehensive talents with the ability to lead creative humanities management by acquiring basic knowledge in business management such as marketing, advertising, etc.

HUMANITIES CONVERGENT CONTENTS DESIGN

Based on various and abundant local cultural contents, we cultivate creative talents who can specialize in developing and distributing humanities' convergence contents that combine humanities and contents.

NORTHEAST ASIAN HUMANITIES FRONTIER

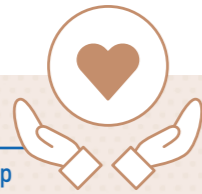
With a focus on the Northeast Asian region (Korea, China, and Japan), students develop their local studies and foreign languages (Chinese and Japanese) to the highest level. Based on this, students develop creative humanities frontiers for social advancement and creative transformation of humanities.

EDUCATION INNOVATION



Going beyond the region and heading towards the world Continuing love towards solidarity Touching hearts

In addition to learning and training, Dong-A University will take the lead in fostering warm-hearted individuals who value community, sharing, sacrifice, and help to contribute to society



Dong-A Talent Donation Volunteer Group
(2019 school year, 6th year)

18 clubs **Over 400** students active



DONG-A TALENT DONATION VOLUNTEER GROUP

Raising students' character, forming sustainable relationships between the university and the local community, and raising their interest in the underprivileged (low-income, multicultural families, the disabled, etc.) in the community

- Launched and operated a Talent Donation Volunteer Group centering on the university's first club (since 2014).
- Selected a group (club) that can contribute talent and organized it into a volunteer group.
- Field: Performance, exhibition and experience, education, effort
- Contents: Music (instruments, songs, pungmul, etc.), dance, magic, sports activities, art, science, art exhibitions (photos, cartoons, etc.), improvement of the residential environment, painting murals, etc.

CLEAN DONG-A VOLUNTEER GROUP

Increasing the interest of the members through campus cleaning activities and campaigns, promoting love for the university

- Increased accessibility to student volunteering through the development of volunteer activities in the university since 2018 (first term)
- Cleaning the university environment, recycling, waste collection, bulletin board organization, etc.
- Awareness improvement campaign: Smoking etiquette, practicing recycling of disposable cups in everyday life, etc.



OVERSEAS VOLUNTEER GROUP

Training global youth leaders through overseas volunteer activities, cultivating volunteer spirit, and increasing cooperation through group activities.

- Content: Educational volunteer work (art, music, etc.), major-linked volunteer work (sanitation, Taekwondo education, etc.), effort volunteer work (mural painting, building/facilities painting, creating rest/ amusement facilities, etc.), cultural exchange (K-POP dance, traditional games, etc.)
- Countries: Vietnam (2015), Cambodia (2016), The Philippines (2017-19)

STUDENT MENTORING PROGRAM

Reducing the burden of tuition/living expenses for students through scholarships

- University Students' Youth Education Support Project
- Mentoring multicultural and North Korean defector students
- University Students' Talent Volunteer Camp
- Seogu student mentoring

Eight out of ten scholarship recipients
More diverse benefits for more Dong-A University students

DONG-A SCHOLARSHIP



Maximum total amount of scholarships paid in Busan, Seoul, and Gyeongsang Province

59.5 billion won



Percentage of scholarship received out of all enrolled students (15,709 out of 17,980 students received scholarships)

87%



Scholarship payment per student (annual)

3.31 million won



3 scholarships per student (17,980 students, 54,047 total cases)

3 PER STUDENT

(based on 2020 University Notification)



Scholarship of Excellence for Freshmen

Dong-A Special Scholarship, Top Student in College Scholarship, etc.

- Full tuition every semester
- Support for monthly book purchase costs
- Provides opportunities for short-term overseas language training

Scholarship for the first successful applicants for regular admission

- Half of tuition fees for each semester if students scored within the top 50% of the admission performance by each department.

[* See Scholarship Rules and Guidelines for details]

University scholarship for enrolled students

- Dong-A Hope Scholarship (Students with financial difficulties)
- Excellent Academic Performance Scholarship
- Undergraduate Education Help Scholarship (Work scholarship)
- Various scholarship funding, etc. for departments



National Scholarship Project

Local Talent Scholarship

- Full tuition (for 1 or 4 years)

Excellent Scholarship Project

- Humanities 100 years, Science and Engineering, and Arts and Sports Vision Scholarships
- Full tuition (for 2 or 4 years) and academic incentives (for those applicable)

Support project for low-income families

- National scholarships for Type I and Type II: Partial tuition fees provided to students within 8 sections of the income bracket
- National Work Scholarship Project (Work scholarship)

External scholarships

- A number of foundations' scholarships that are only granted to students enrolled at Dong-A University
 - > Dong-A Cultural Foundation, Dong-A Scholarship, Hyangmun Scholarship, etc.
 - > Department scholarship foundations such as Seobong Scholarship Foundation, Hanwon Scholarship Foundation, etc.
- Other scholarship foundations
 - > 150 scholarship foundations, including the Agricultural and Fishing Village Hope Foundation, Lotte Hope Foundation, Songwon Cultural Foundation, Asan Social Welfare Foundation, Jeongsu Scholarship Foundation, Cheongchon Scholarship Foundation, Hyeopseong Cultural Foundation, BNK Financial Group Hope Sharing Foundation, etc.



A Global Era, Academic Exchange Network Platform for 307 institutions in 35 countries

Global University Leading the 21st Century

The first step toward becoming a globally prestigious university is to understand the prestigious universities in the world.

Dong-A University has signed agreements with 307 universities, institutions, and research institutes in 35 countries around the world to establish a solid academic network in preparation for the globalization era.

In addition, we signed MOUs with leading overseas educational institutions to strengthen our international capabilities and are actively attracting international students under the slogan "Dynamic Dong-A Inbound." We will establish a differentiated internationalization program for Dong-A University by reviewing the case of joint degree programs and convergent curriculum with overseas universities.

1,061 students
Attracted foreign students

35
Countries

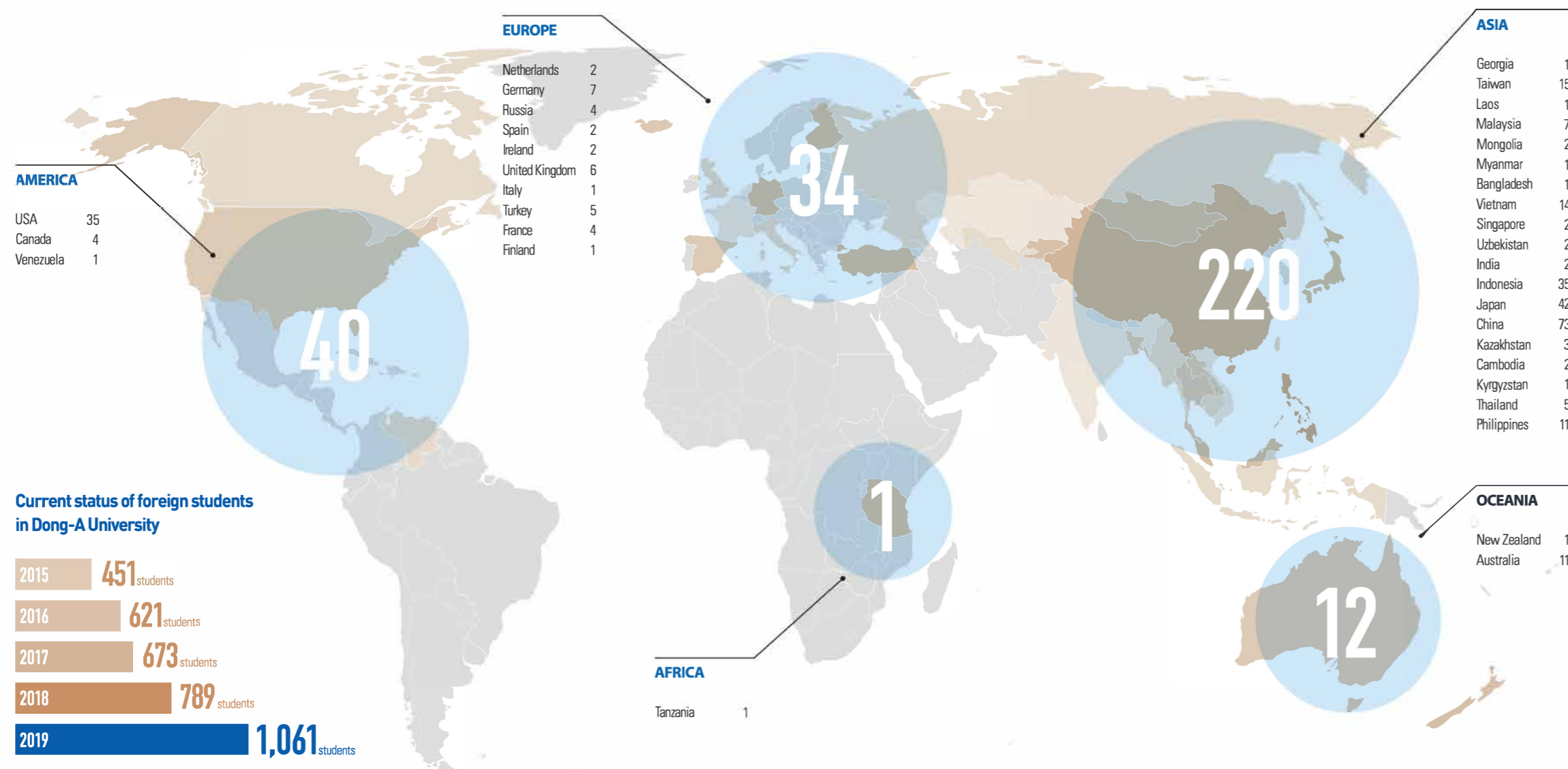
307
Institution networks

International Education
Quality Assurance
System (IEQAS)
Certified University

IBM
(Department of Integrated
Business Management)
All lectures in English,
credits recognized for field Trip

**LANGUAGE STUDY
PROGRAM CURRICULUM**
Providing various mathematics
courses for foreign students

GLOBAL DONG-A



Strengthening students' global competence

- Enhancing internationalization capabilities through exchanges between domestic and foreign students
DAILY (Integrated Supporters for Foreign Students)
- Improving mutual understanding of culture through exchanges between domestic and foreign students
Cultural exploration and learning and settlement support program (always in operation)
- Same-age student group mentoring programs
Global Win-Win (academic tutoring, major studies)
- A local community moving beyond nationality to become one with the university
Dong-A Donghwa (Volunteer for the translation of fairy tale books for multicultural families)

International Exchange Program

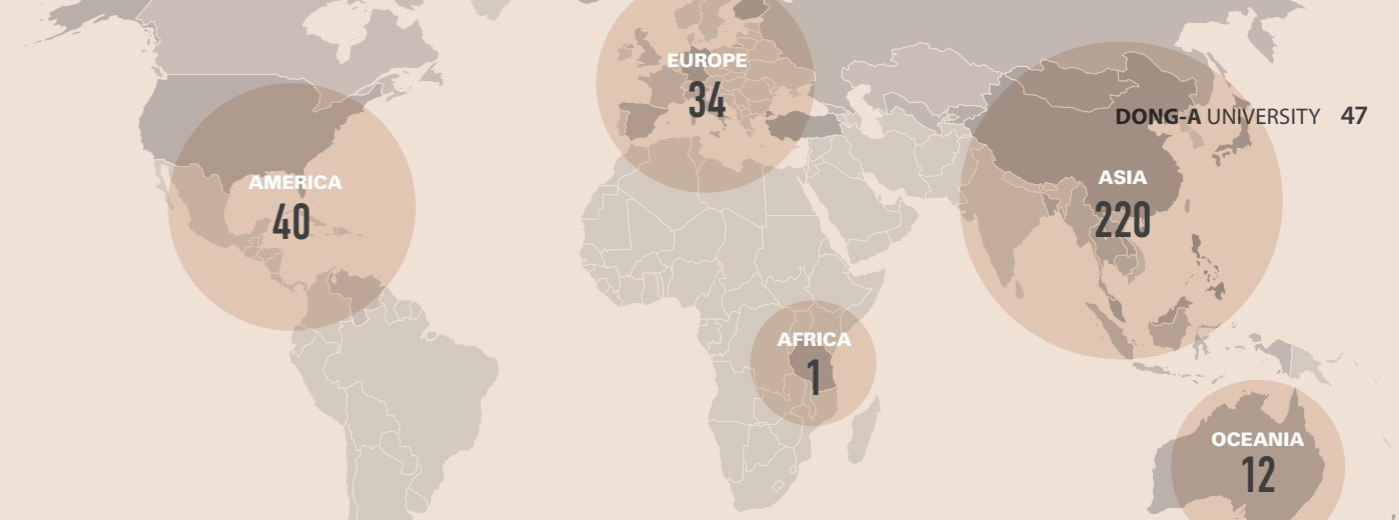
- **Student Exchange**
Studying with local university students at the overseas sister school of Dong-A University and obtaining credits from the sister school and Dong-A University
- **Joint Degree**
After taking one or two years of classes at the overseas sister school, that school's students can obtain a degree from Dong-A University and the sister school.
- **Short-term Language Training**
Completion of three to six weeks of language training programs at overseas sister schools during summer and winter vacation.
- **Korean Summer Session(K.S.S.)**
During the summer vacation, students from overseas sister schools are invited to conduct cultural exchanges for two weeks with the students from Dong-A University serving as staff
- **Online Exchange (Dong-A International Virtual Exchange (D.I.V.E.) program**
By completing online classes operated by overseas sister schools of Dong-A University in Korea, students can participate as exchange students in short-term language training programs without actually going overseas

Approximately
750 students dispatched from **16** countries

GLOBAL EXCHANGE INSTITUTION

Signed agreements with 307 universities, institutions and research institutes in 35 countries around the world
Established a solid academic network for the globalization era

Academic Collaboration Partners



AMERICA

USA

- Angelo State University
- Ball State University
- Baylor College of Medicine
- California State Univ. Fresno
- Chicago State University
- Dept. of Hospitality Management, San Francisco State Univ.
- Eastern Michigan University
- Hawaii English Language Program at the University of Hawaii, Manoa
- Hawaii Pacific University
- Illinois Institute of Technology
- Kean University
- Lander University
- Metropolitan State University of Denver
- Northeast Asian Economic Forum
- Southwestern Oklahoma State University
- Texas Medical Science Foundation and Houston Medical Institute
- The Univ. of Washington College of Engineering
- The University of Dallas at Texas
- The University of North Carolina, Pembroke
- The University of Pennsylvania English Language Programs
- The University of Tennessee
- Tourism Industry Institute, Univ. of Houston
- University of Arts
- University of California Berkeley, Summer Session
- University of California, Davis
- University of California-San Diego Extension
- University of Houston
- University of Missouri-Columbia
- University of Nebraska at Kearney
- University of Nebraska at Omaha
- University of North Carolina-Greensboro
- University of North Carolina-Wilmington
- West Virginia University
- Western Carolina University
- Western Michigan University

Venezuela

- Universidad de Oriente

Canada

- Algoma University
- Lakehead University
- Thompson Rivers University
- University of Victoria

ASIA

Georgia

- ICARUS College

Taiwan

- Chinese Culture University
- Chung Hua University
- Fen Jen Catholic University
- Feng Chia University
- Hsingwu University
- Ling Tung University
- Mingchuan University
- National Chengchi University
- National Chung Cheng University
- National Chung Hsing University

- National Donghwa University
- National Kaohsiung Normal University
- National Taipei University of Business Taiwan
- National Taiwan Normal University
- Soochow University

Laos

- Souphanouong University

Malaysia

- HELP University
- International Islamic University Malaysia
- Sunway University
- Taylor's University
- University College Sedaya International
- University of Kuala Lumpur(UniKL)
- University of Malaya

Mongolia

- Mongolian State University of Education
- Mongolian University of Science and Technology

Myanmar

- Yangon Technological University

Bangladesh

- Daffodil International University

Vietnam

- Binh Duong University
- Duy Tan University
- Hanoi University of Industry
- Hanoi University of Technology
- Ho Chi Minh City University of Education
- Korea-Vietnam Friendship IT College, Ho Chi Minh City
- National Economics University
- Phuong Dong University
- University of Minnesota, Vietnam Center
- University of Science and Technology of Hanoi
- University of Technical Education, Ho Chi Minh City
- Vietnam Academy of Social Sciences
- Vietnam National University - Ho Chi Minh City
- Vietnam National University of Science, Hanoi

Singapore

- Nanyang Polytechnic
- Nanyang Technological University

Uzbekistan

- Tashkent State Pedagogical University named after Nizami
- Uzbekistan State World Languages University

India

- KIIT University
- National Institute of Technology Calicut
- University of Calcutta

Indonesia

- Atma Jaya Catholic University of Indonesia
- BINUS University
- Indonesian Computer University
- Institute of Transportation & Logistics Management of Trisakti
- International Women University
- Pasundan University
- Polytechnic Harapan Bersama
- Polytechnic Piksi Input Serang

- President University
- Shipbuilding Institute of Polytechnic Surabaya
- State University of Surabaya
- Stie Ekuitas
- Stmik Bani Saleh
- Stmik Widya Utama
- Trisakti Institute of Tourism
- Trisakti School of Management
- Universitas Ahmad Dahlan
- Universitas Airlangga
- Universitas Internasional Batam
- Universitas Muhammadiyah Malang
- Universitas Muhammadiyah Surakarta
- Universitas Muhammadiyah Yogyakarta
- Universitas Padjadjaran
- Universitas Pendidikan Indonesia
- Universitas Telkom
- Universiti Islam Indonesia
- University of 17 August 1945 Semarang
- University of Diponegoro
- University of Indonesia
- University of Lambung Mangkurat
- University of Mercu Buana
- University of Muhammadiyah Jakarta
- University of Muhammadiyah Prof. Dr. Hamka
- University of Muhammadiyah Purwokerto
- Widyatama University

Japan

- 24 Universities in Busan and Fukuoka
- Aichi Shukutoku University
- Chikushi Women's University
- Daido University
- Fukuoka University
- Fukuoka Women's University
- Himeji Institute of Technology
- Iwate University Center for Cooperative Research and Development
- Kanazawa Seiry University
- Kanazawa University
- Kansai University
- Kobe Asahi Hospital
- Kobe Gakuin University
- Kobe University (Graduate School of Medicine)
- Kumamoto University
- Kyushu Institute of Technology
- Kyushu International University
- Kyushu Sangyo University
- Kyushu University
- Meijo University
- Musasino University
- Nagoya University Graduate School of Bioagricultural Sciences
- Nara Gakuin University
- North Asia University
- Okayama University Faculty of Agriculture
- Osaka University (Graduate School of Engineering Science)
- Ritsumeikan Asia Pacific University
- Ritsumeikan University
- Ryukoku University
- Sapporo Gakuin University
- Siebold University of Nagasaki
- Tama Art University
- Teikyo University
- Tokushima University Archaeological Heritage Management Office
- Umemura Educational Institutions
- University of East-Asia

- University of Fukui Faculty of Engineering
- University of Hyogo
- University of Marketing and Distribution Sciences
- University of Tsukuba College of Social Sciences
- Waseda University
- Yokohama National University

China

- Baoji University of Arts and Sciences
- Beijing Forestry University
- Beijing International Studies University
- Beijing Language and Culture University
- Capital University of Economics and Business
- Center for Southern Asian Studies, Peking University
- Chongqing Technology and Business University
- Dalian Maple Leaf College of Technology
- Dalian University of Foreign Languages
- Dalian University, Physical Education College
- Donghua University
- East China University of Science & Technology
- Fudan University
- Gansu Province
- Guangzhou City Construction College
- Harbin University of Commerce
- Henan University
- Huaibei Normal University
- Huazhong Agricultural University
- Inner Mongolia University of Science and Technology
- Institute for Tourism Studies
- Jiamusi University
- Jiangnan University
- Jiangsu Provincial Academy of Social Sciences
- Jilin College of the Arts
- Jinan University
- Jiujiang University
- Lanzhou University
- Mudanjiang Normal University
- Northeast Normal University
- Ocean University of China
- Qingdao Agricultural University
- Qufu Normal University
- Renmin University of China
- Security and Environmental Engineering Department, Jixi University
- Shaanxi Polytechnic Institute
- Shaanxi Radio & Television University (Shaanxi Business College)
- Shandong Economic University
- Shandong University
- Shandong University of Weihai
- Shandong University of Technology
- Shandong Vocational College of Light Industry
- Shanghai Medical University
- Shanghai Ocean University
- Shanxi University
- Shenyang Pharmaceutical University
- Shenzhen University
- Sichuan Normal University
- Sichuan University
- South China Agricultural University
- Southwest University
- Southwest University of Political Science and Law
- Tianjin Institute of Physical Education
- Tourism Research Institute, Hangzhou University
- Tsinghua University
- United International College
- Weinan Normal University

- Xi'an Fanyi University
- Xi'an International University
- Xianyang Normal University
- Yanbian University
- Yanbian University of Science and Technology
- Zhengzhou University
- Zibo Vocational Institute
- Dalian Translation and Interpretation College
- Shanxi Science and Technology College for Further Education
- Yangzhou Hospitality Institute
- Zhongshi Korean International School
- Medical College, Zhejiang University
- Chongqing College of Electronic Engineering
- The National Leading Group for Teaching Chinese as a Foreign Language (Confucius Institute)
- Haidu College, Qingdao Agricultural University
- Qingdao Medical College

Kazakhstan

- Kazakh Institute of Physical Education
- Kazakh Leading Academy of Architecture and Civil Engineering
- M. Narikbayev Kazguu University

Cambodia

- Cambodian University for Specialties
- Royal University of Phnom Penh

Kyrgyzstan

- Osh State University

Thailand

- Asian Institute of Technology
- Chulalongkorn University
- Kasetsart University
- King Mongkut's University of Technology

Philippines

- Ateneo de Manila University
- Colegio San Agustin-Bacolod
- Malayan Colleges Laguna
- Mapua Institute of Technology
- Our Lady of Fatima University
- University of Baguio
- University of St. La Salle
- University of the Philippines
- University of the Philippines Diliman
- University of the Philippines Manila
- University of San Jose-Recoletos

AFRICA

Tanzania

- University of Dar es Salaam

OCEANIA

New Zealand

- University of Auckland English Language Academy

Australia

- Cooperative Research Centre for Tourism, Murdoch University
- Curtin University
- Griffith University
- La Trobe University

- Macquarie University
- Monash University
- Queensland University of Technology
- Swinburne University of Technology
- The University of Queensland
- University of Sunshine Coast
- University of Western Australia

EUROPE

Netherlands

- C Concept Design
- Tilburg University

Germany

- Friedrich-Alexander University, Bussan Campus
- Friedrich-Alexander University-Neuberg
- Hanns-Seidel Stiftung
- Ludwig-Maximilians-Universität München
- Rheinisch-Westfälische Technische Hochschule Aachen
- University of Applied Sciences of Zwickau
- University of Bonn

Russia

- Far Eastern National University
- Novgorod State University
- Southern Federal University
- Vladivostok State University of Economics and Services

Spain

- University of Malaga
- Universidade de Santiago de Compostela

Ireland

- Institute of Technology, Carlow
- Swan Training Institute

United Kingdom

- Anglia Ruskin University
- Middlesex University
- The University of Liverpool
- University of East London
- University of Hertfordshire
- University of Wales, Institute of Cardiff

Italy

- University of Messina

Turkey

- Abdullah Gul University
- Dokuz Eylül University
- Fatih University
- Istanbul Kultur University
- Istanbul Technical University

France

- Ecole des Arts Decoratifs de Strasbourg
- Ecole supérieure de art et design Grenoble-Valence
- Université D'Angers
- Université Paris I Pantheon Sorbonne

Finland

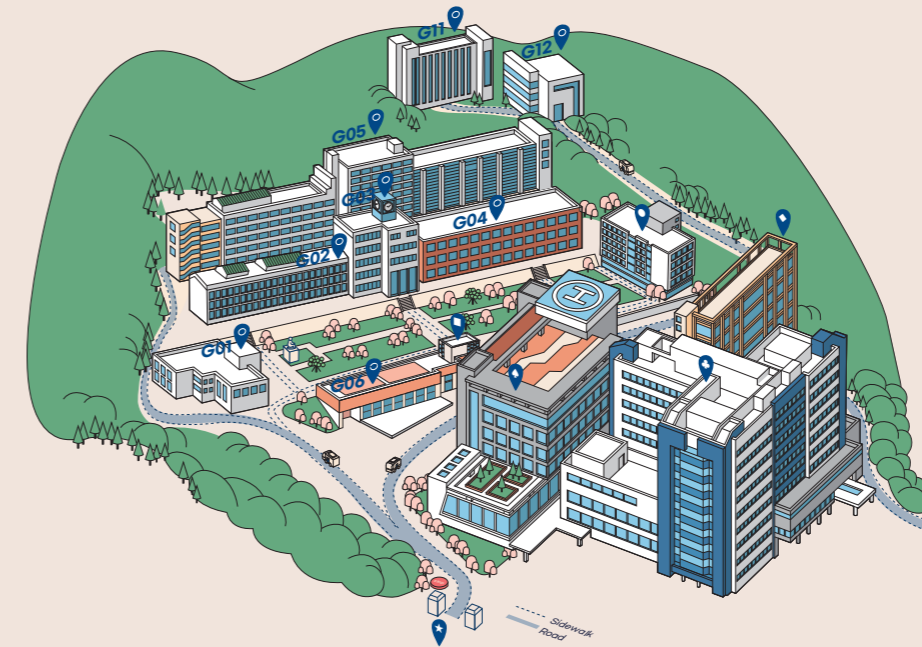
- Asia Exchange

SEUNGHAK CAMPUS



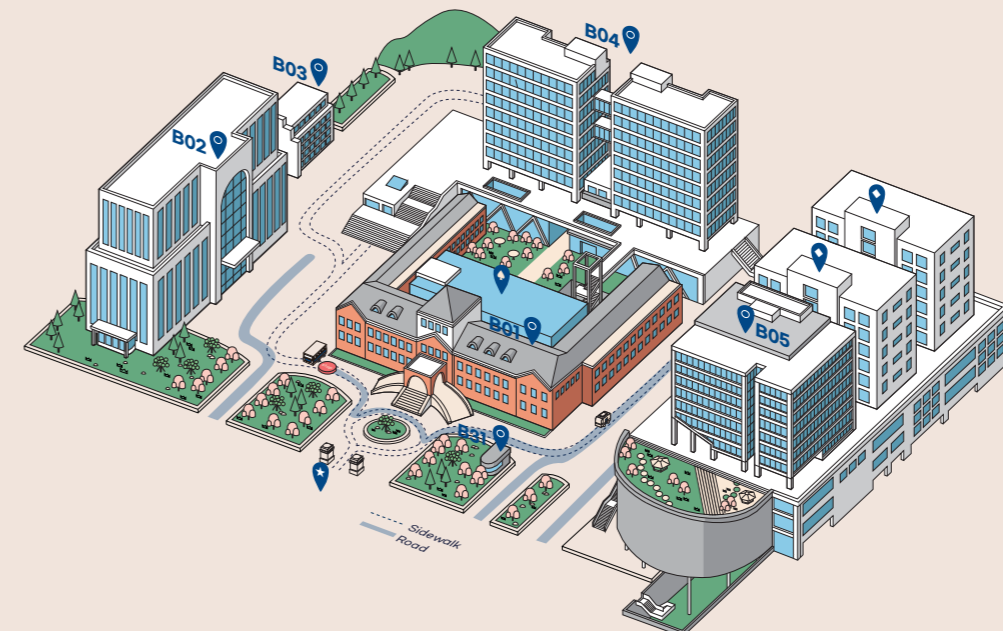
- | | | |
|---|---|---|
| S01 University Main Hall and College of Humanities (A) | S08 Faculty Hall (W) | S15 Hallim Dormitory Seunghak Hall 1 |
| S02 Student Hall (Q) | S09 College of Natural Resources and Life Science and College of Health Sciences | S16 Student Army Training Corps (DE) |
| S03 College of Engineering Building 1 (P1) | S10 Hallim Library (B) | S17 College of Arts and Sports Hall 2 |
| S04 College of Engineering Building 2 (P2) | S11 College of Natural Sciences (E) | S18 College of Arts and Sports Practice Hall |
| S05 College of Engineering Building 3 (P3) | S12 College of Engineering Building 4 (P4) | S19, 20 Hallim Dormitory Seunghak Hall 2 |
| S06 College of Engineering Building 5 (RS) | S13 Entrepreneurship Hall | S31 Security Guard Office |
| S07 College of Arts and Sports Hall 1 | S14 Industry-Academy Hall (SM) | ★ Main Gate |

GUDEOK CAMPUS



- | |
|---|
| G01 Seokdang Memorial Hall (GE) |
| G02 College of Medicine Lecture Hall (S1) |
| G03 College of Medicine (S2) |
| G04 Education Hall |
| G05 Gudeok Lecture Halls 1, 2 (GA) |
| G06 Research Hall |
| G11 Formerly College of Arts |
| G12 Formerly College of Arts Practice Hall |
| ♣ Dong-A University Hospital (Main Building) |
| ♠ Dong-A University Hospital (West Building) |
| ◆ Dong-A University Hospital (East Building) |
| ■ Dong-A University Hospital (Central Building) |
| ● Dong-A University Daesin Intermediate Care Hospital |
| ★ Main Gate |

BUMIN CAMPUS



- | |
|---|
| B01 Seokdang Museum (BM) |
| B02 School of Law (LS) |
| B03 Life-long Education Center (BE) |
| B04 General Lecture Building (BA-BD) |
| B05 International Hall |
| B31 Security Guard's Office |
| ♠ Seokdang Art Museum |
| ◆ Hallim Dormitory Bumjin Hall |
| ★ Main Gate |

The leader of change for the future

Dong-A University creates your history



DONG-A, WHERE WE MAKE YOUR HISTORY

Since its foundation in 1946, Dong-A University is the representative private school of the region which has strived to nurture the talents who can move forward together with the events of Korean modern history and lead the nation.

Based on Seokdang Jung Jae-hwan's educational philosophy 'Dong-Jwa-Moon-Do' (which means teacher and pupils sitting down and discussing knowledge together), Dong-A University has undertaken and developed various innovative research and teaching.

Each of the 230,000 alumni, who are thriving throughout society in such fields as politics, business, law, culture and sports, acts as the face of Dong-A.

With the Fourth Industrial Revolution and the era of the new normal around the corner, Dong-A University is once again at the forefront of change for the future.

Our university has been selected by the government as 'Innovative Leading University of the Fourth Industrial Revolution', 'Autonomous Improvement University via the University General Competency Diagnosis', 'Leading University for Customized Social Industry-Academy Cooperation (LINC+)', 'BK21 Project', and also as the university that operates the 'Green Convergence Technology Talent Nurturing Specialized Graduate School'. Thus, we can be considered as the leader in producing the future comprehensive talents.

Through educational innovation that surpasses the existing boundaries and limits, we will introduce a micro-module system and comprehensive majors based on social demand and are also setting up futuristic infrastructure such as hybrid-type automatic recording lecture rooms, drone hub centers and cloud innovative centers.

'Prestigious private university that embraces the local region and meets the world' going beyond the 80 years since its foundation, Dong-A University is moving towards 100 years in the future to take a leap forward to a greater degree and intends to 'write history one page at a time' with everyone.

We would appreciate your support.

Thank you.

President of Dong-A University **Lee Hae-woo**

The new normal era,
We have 230,000 alumni who are active on the global stage

TOTAL NUMBER OF
 DONG-A UNIVERSITY ALUMNI

DONG-A
 **230,000**

Numerous Dong-A graduates join in creating a world full of creativity, justice, challenge and passion. 230,000 Dong-A alumni from all walks of life around the world have worked together for the development of Korea.

The powerful alumni network is the pride and driving force of Dong-A University. Meet the brilliant alumni who have realized the dream which began at Dong-A University.

WORLD CLASS ————— **+ DONG-A PEOPLE**



Cho Moo-jeh
 Graduated from the Department of Legal Studies

A warrior of integrity + impartiality
A quiet judicial revolutionist

- Current distinguished professor at the Dong-A University School of Law
- Former Supreme Court justice
- Former head of the Busan Court Coordination Center

Park Kwan-yong
 Graduated from the Department of Political Science and Diplomacy

A thorough man of the parliament, the first House Speaker among all alumni

- Current Chairman of the 21st Century National Development Institute
- The 16th House Speaker of the National Assembly

Kim Doo-kwan
 Graduated from the Department of Political Science and Diplomacy

Minister who was formerly a village head, a leader in breaking down regionalism

- Current member of the National Assembly
- The 5th Minister of Government Administration and Home Affairs
- The 34th Governor of Gyeongsangnam-do Province

Kang Byung-joong
 Graduated from the Department of Legal Studies

‘Tire Gang’, a living myth of success created through brand new technology

- Current CEO of NEXEN Group
- Current Chairman of KNN
- The 15th to 17th President of the Busan Chamber of Commerce and Industry

Shin jung-taek
 Graduated from the Department of Business Administration

A Leader in regional development
A self-made CEO

- Current CEO of Seun Steel
- Current CEO of the Busan Community Chest of Korea
- The 19th and 20th President of the Busan Chamber of Commerce and Industry

Yang Jung-mo
 Graduated from the Department of Physical Education

South Korea’s first Olympic gold medalist

- Current CEO of the Hope Tree Community
- Gold medalist in free-style wrestling for 62-kg at the Montreal Olympics
- Gold medalist in freestyle wrestling for featherweight at Bangkok Asian Games

Nam Yeong-shin
 Graduated from the Department of Education

First Army Chief of Staff from the ROTC, in the 72 years since the founding of the Army

- Current Army Chief of Staff
- Former Commander of the Ground Operations Command of the Army
- Former Commander of the Military Security Assistance Command

Kwak Sin-ae
 Graduated from the Department of Korean Language and Literature

First Asian woman to win an Academy Award for Best Picture

- Current CEO of Barunson E&A
- Won the Best Picture Award at the 92nd Academy Awards in 2020 (Parasite)
- Won the Best Producer Award in the 20th Annual Women In Film of the Year Awards in 2019 (Parasite)

Dong-A, the beginning and end of differentiated competitiveness

Outstanding research competency and shining accomplishment

DONG-A

+ HUMAN RESOURCES

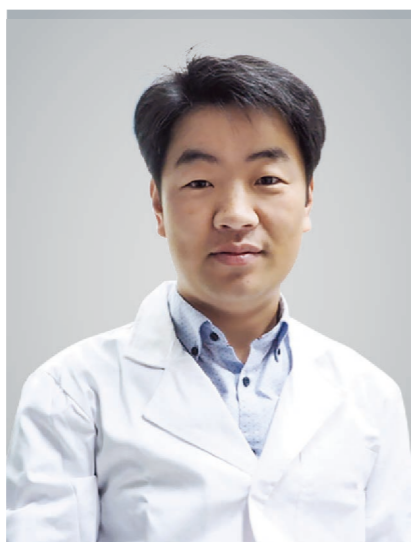


Lee Seon-woo

Professor at the Department of Applied Biology

Published in Nature Biotechnology, Selected as University Focus Research Institute by the Ministry of Education

In 1999, Professor Lee Seon-woo received the American Society for Microbiology's Excellent Paper Presentation Award, the Korea Science and Technology Organization's Science and Technology Excellent Paper Award in 2008, the Young Plant Pathologist Award of the Korea Plant Pathology Society in 2012 and was selected for the Rural Development Office's 'Woo Jangchun Project' in 2015. Furthermore, his paper, published in "Nature Biotechnology", was the first one to reveal the cluster structure and function of "bodyguard microorganisms" around plants that are resistant to disease.

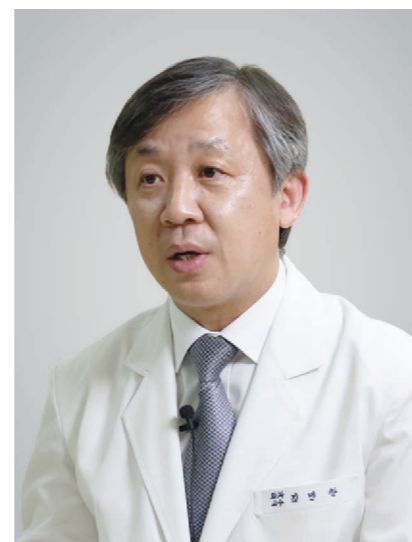


Cho Wan-seob

Professor at the Department of Pharmaceutical Life Engineering

Won the Minister of Science and ICT Award in 2020

Professor Cho Wan-seob not only achieved outstanding research achievements with the discovery of physicochemical properties that affect the toxicity of nanomaterials, but he is also the project leader of the ISO International Division of Standards in Nanotechnology (ISO TC229/WG3) and is currently working on the development of international standards. He has been a professor at Dong-A University since 2012 and serves as a vice chairman of the planning committee and is an academic council member of the Korean Toxicity Society, as well as the academic secretary of the Korean Toxic Pathology Association.



Kim Min-chan

Professor at the Department of Medicine

Korea's top doctor in the laparoscopy field

Professor Kim Min-chan has conducted 3,800 stomach cancer surgeries since 2002 and was the first to publish a paper on laparoscopic gastric cancer in 2005. He won the Best Researcher of the Korean Gastric Cancer Association in 2015 and the Excellent Video Award from International Association of Gastric Cancer in 2017. Following these, he published a paper comparing the survival rate of laparoscopic and open surgery in early stomach and progressive stomach cancer in the American Cancer Society Journal and the Journal of Surgery in 2019.



Kim Oh-yeon

Professor at the Department of Food Science and Nutrition

Won Seokdang Academic Award in 2020

Since 2018, Professor Kim Oh-yeon has contributed to the selection of the best business group in September 2020 by serving as the head of Brain Busan 21+ business group (aging-friendly bio-material business group). Over the past five years, Professor Kim has published 28 SCI(E)-level papers (13 papers in the top 25% (Q1) of the JCR ranking and 2 papers in the top 7%). In 2018, she received the National Health Management Project Development Contribution Award from National Health Insurance Service and the Academic Progress Award from Korean Society of Clinical Nutrition. In 2019, she received the Parametric Aesthetics Award from the Korean Society for Community Nutrition.



Park Hwan-tae

Professor at the Department of Pre-Medicine

Peripheral Neuropathy Research Center selected as MRC

Dong-A University's Peripheral Neuropathy Research Center, which was selected in the field of general medicinal science for the leading research center support project (Medical Research Center, MRC) in 2016, will receive 6.7 billion won in research funds and 4 billion won in subsidies from the government, local governments and pharmaceutical companies for seven years until 2023. The center will strive hard to be reborn as a world-class research institute that actively solves peripheral neuropathy, a difficult task for humanity, by connecting with Dong-A University Hospital and cooperating with world-class institutions.



Kwon Myoung-a

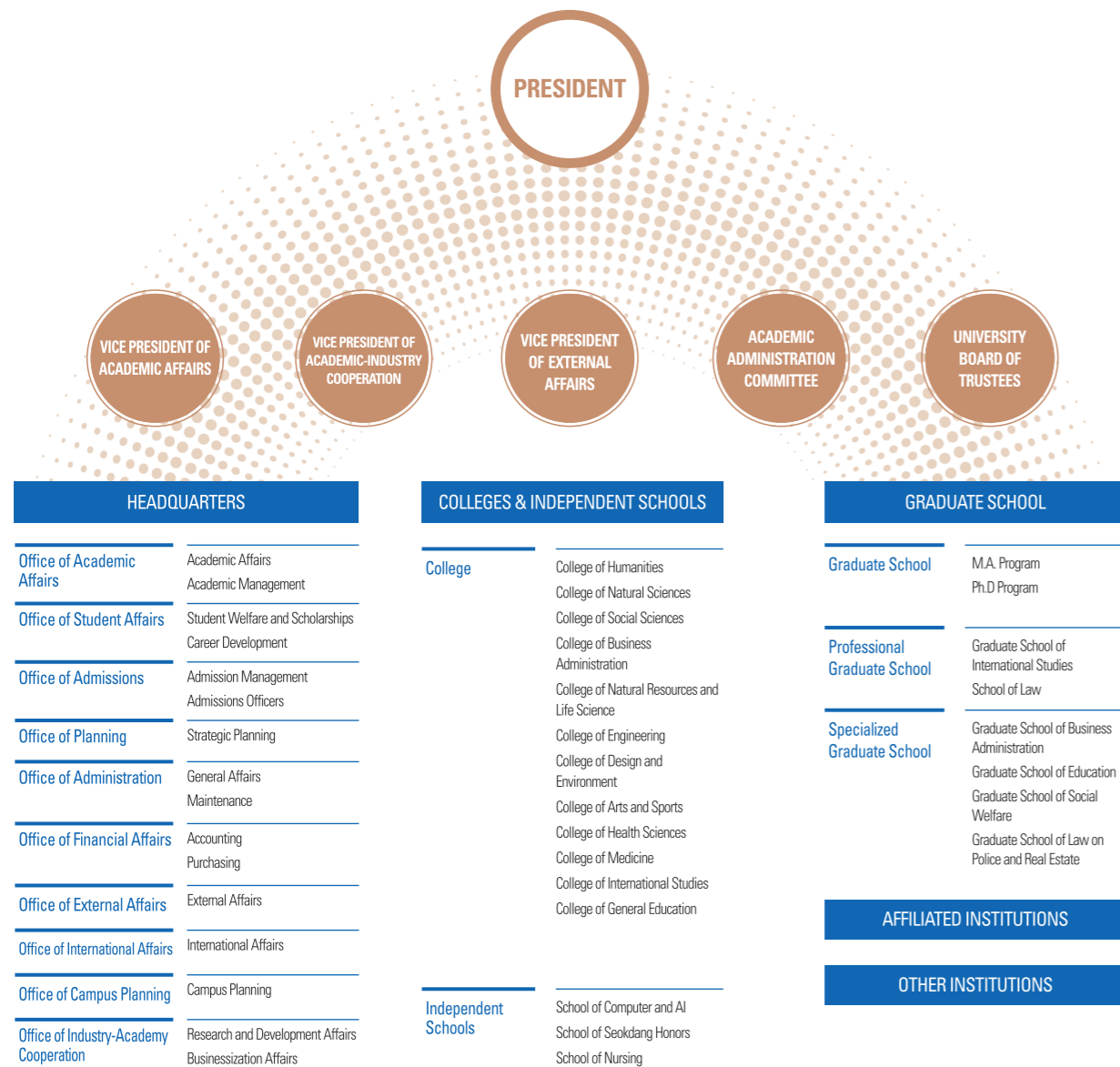
Professor at the Department of Korean Language and Literature

Humanities and Social Studies Institute selected for supported project

In 2019, it was selected as a project to support the Ministry of Education's Humanities and Social Research Institute under the theme of 'Connected Body Theory and Gender Effect Research', and was thus promised to receive 1.2 billion won for six years. By combining research methods for affection and gender, the Research Institute of Gender, Affect attempts to transform the human paradigm of perceiving life, death, disease, disability, minorities, and posthumans. Researchers from various fields, including classical studies, modern literature, social welfare, disability studies, film, cultural research, aesthetics, science, and technology, are actively building overseas networks.

Organizational Chart

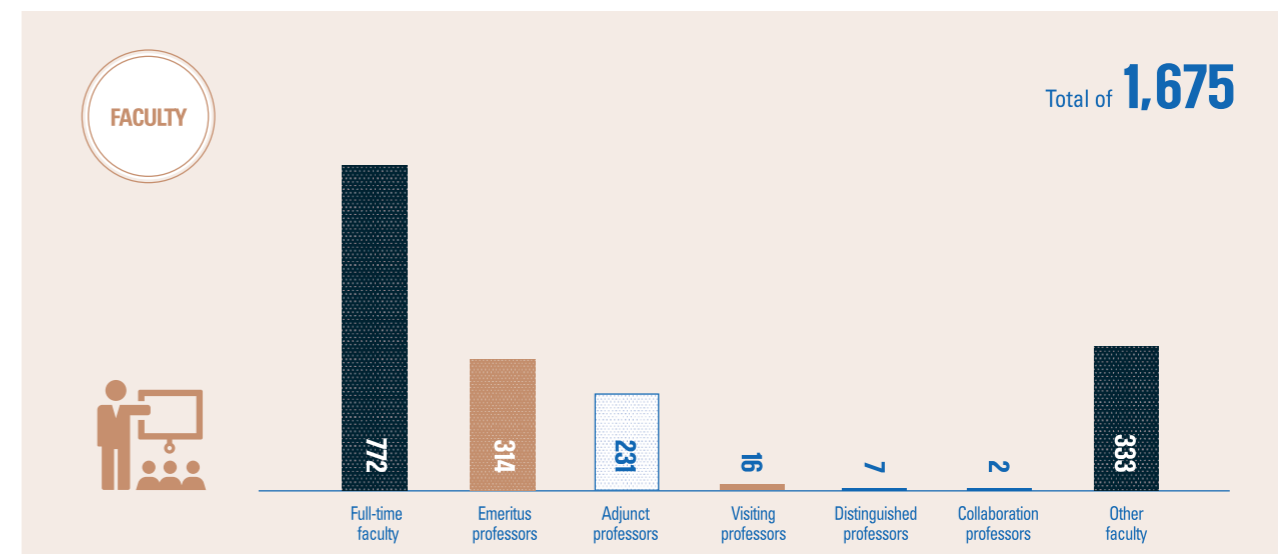
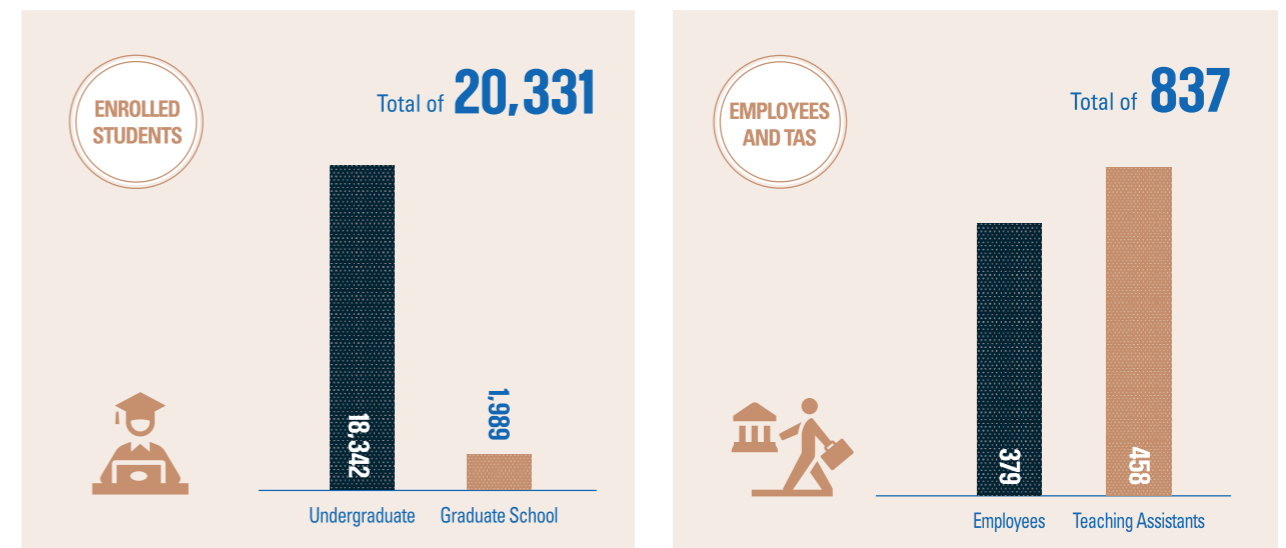
DONG-A ORGANIZATION



Current Student Report

(Based on April 1, 2020)

NUMBERS OF STUDENTS, FACULTY & STAFF



CONNECT WORLD



+ GROWTH

DONG-A CONNECTS WORLD + GROWTH

The glowing strength that illuminates the world,
Dong-A University, the proud name that awakens the world.
Dong-A's world is a place where various knowledge live and
freely interact with each other.

It is full of creativity and creative thinking of 21st-century talents
who will open a greater future without national and
academic boundaries.

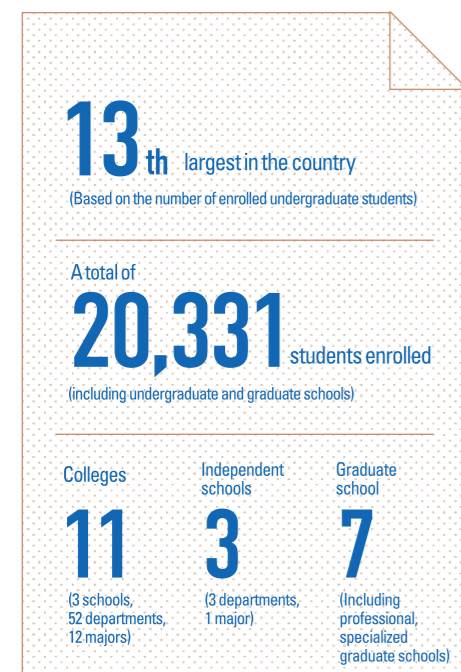
Dong-A's world has continued to grow ceaselessly.

The futuristic multi-campus, Dong-A

which has a more beautiful path ahead than the one taken so far

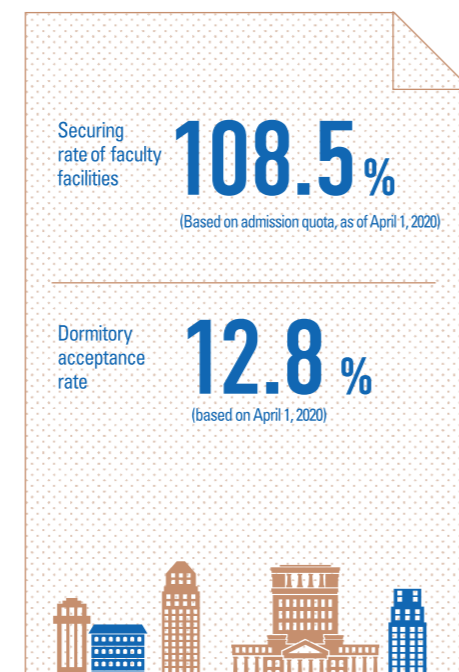
Dong-A University's 75-year-old history of cultivating cultural and intellectual individuals, who will enrich the world and talents with an open perspective and the wisdom of co-prosperity, has proved that education is the hope of the future. We have provided the best educational environment for students to concentrate on their studies and broaden their international perspectives. The historic Dong-A University is the cradle of national competitiveness. Each campus which is centered on research, international exchange, and medicine is the stage of Dong-A's passion, creativity, and dreams.

Dong-A University's main campus can boast of its scale at the national level.
The 13th largest in the country

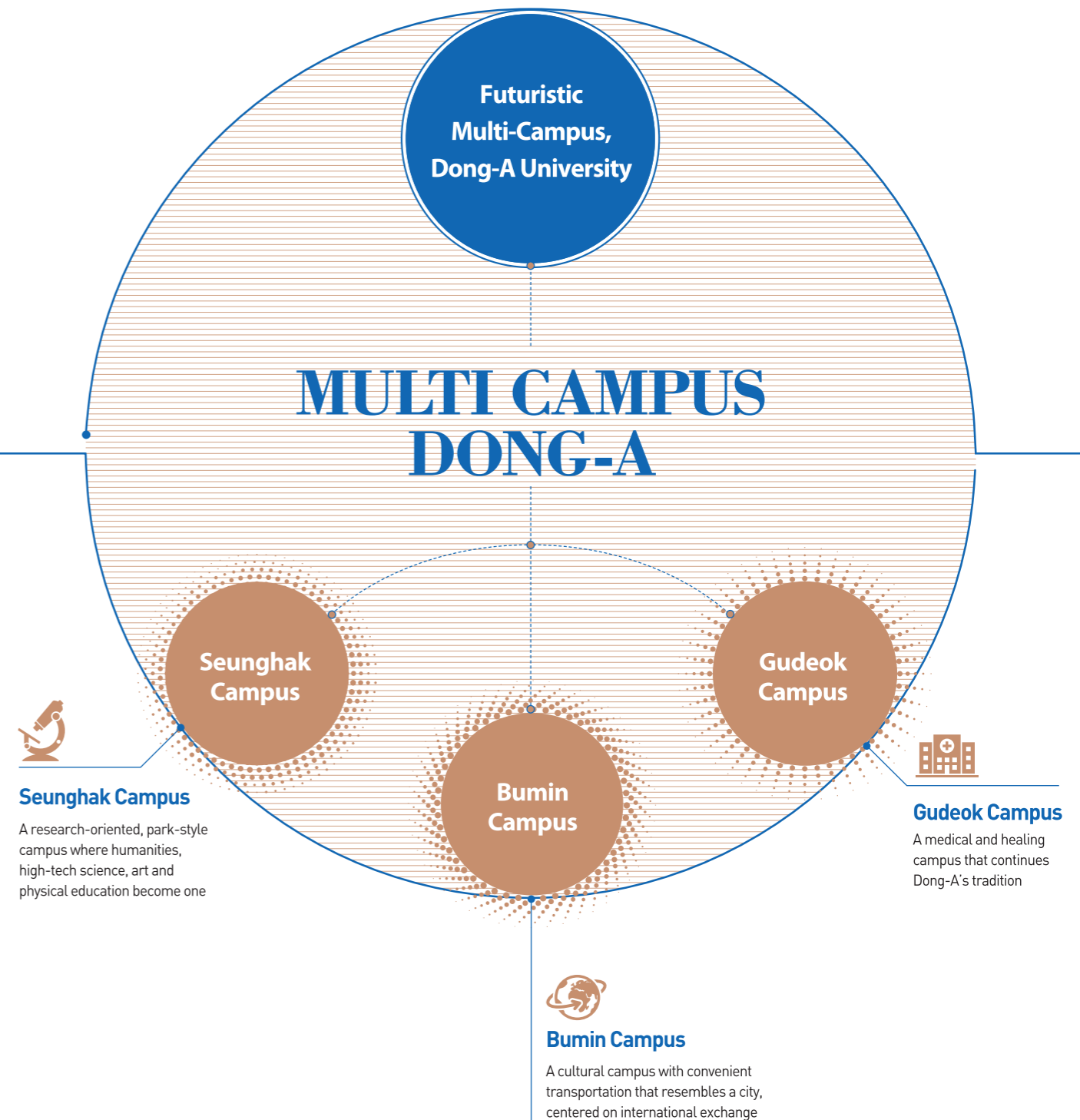


Continuous improvement of the educational environment through a step-by-step campus development project

(Source of data: University notification disclosure data)



Dong-A University has three campuses that are specialized in research, international exchange, and medicine.





Seunghak Campus, which has a large park-style site and beautiful view on Nakdonggang River facing Eulsukdo Island

It is a research-oriented, park-style campus where humanities, advanced science, art and physical education become one. The campus represents Dong-A with its outstanding scenery and beauty.



SEUNGHAK CAMPUS

College of Humanities

Department of Philosophy and Medical Ethics, School of History and Culture (History, Archaeology and Art History majors), Department of Korean Language and Literature, Department of Education, Department of Children Studies

College of Natural Sciences

Department of Information and Mathematics, Department of Semiconductor, Department of Chemistry, Department of Biological Science

College of Natural Resources and Life Science

Department of Molecular Genetic Engineering, Department of Applied Biology, Department of Biotechnology, Department of Life Resource Industry Studies

College of Engineering

Department of Architectural Engineering, Department of Civil Engineering, Department of Environmental and Energy Engineering (Future Energy Engineering major, Environmental Safety major), Department of Electrical Engineering, Department of Electronics Engineering, Department of Industry and Management Systems Engineering, Department of Naval Architecture and Offshore Engineering, Department of Chemical Engineering, Department of Material science and Engineering

College of Design and Environment

Department of Architecture (5-year curriculum), Department of Fashion Design, Department of Urban Planning Engineering, Department of Landscape Architecture, Department of Industrial Design

College of Arts and Sports

Department of Arts, Department of Crafts, Department of Music, Department of Physical Education, Department of Taekwondo

College of Health Sciences

Department of Food Science and Nutrition, Department of Pharmaceutical Life Engineering, Department of Health Management

School of Computer and AI

Department of Computer Engineering, Department of AI

BUMIN CAMPUS

Culturally-oriented Bumin Campus centered on international exchanges that has convenient transportation in downtown Busan.



Bumin Campus, which was completed in 2012, is an urban cultural campus specialized in international exchanges. The General Lecture Building (twin buildings), the symbol of Bumin Campus with outstanding scenery and beautiful landscape, won a silver prize at the "Architectural Beauty Contest" hosted by Busan City in 2008.

College of Social Sciences

School of Political Science · Sociology (Politics and Diplomacy major, Sociology major), Department of Public Administration, Department of Social Welfare, Department of Media Communication, Department of Economics, Department of Police · Firefighting

School of Seokdang Honors

Public Policy major

College of Business Administration

Department of Business Administration, Department of Tourism Management, Department of International Trade, Department of Management Information Systems, Department of Finance, Department of Integrated Business Management, Department of Intellectual Service Management

College of International Studies

Department of Global Business, Department of British and American Studies, Department of Chinese Studies, Department of Japanese Studies



General Lecture Building at Bumin Campus
Hosted by Busan in 2008
A silver prize at the
"ARCHITECTURAL BEAUTY CONTEST"

GUDEOK CAMPUS



Medical and healing-type Gudeok Campus that continues Dong-A's tradition

Dong-A University Hospital, where medical students can experience and study in person, is located in Gudeok Campus, a space where they can freely develop their imagination. It is a soothing and healing-type medical campus that heals the human body and mind.

College of Medicine

Department of Pre-medicine, Department of Medicine

School of Nursing

Department of Nursing

since **1946**

Gudeok Campus, which was established at the founding of the university, boasts the longest history and tradition.





The only cardiovascular and cerebrovascular disease treatment center in the Busan-Ulsan region, where the power of medical expertise and virtue of human art coexist

Dong-A University Hospital

Dong-A University Hospital was designated by the Ministry of Health and Welfare for about 10 government health policy support projects, including the Cardiovascular Disease Center in the Busan region, Busan's only regional Emergency Medical Center, Busan Metropolitan Dementia Center, Newborn Treatment Regional Center, Busan Disabled Health Center, and cord blood bank in the Busan-Gyeongnam region. Through exemplary execution of projects, Dong-A Hospital is making great contributions to government policies, preventing and treating diseases and aiding local residents to lead healthy and happy lives.

Dong-A University shares the latest medical information and medical technology through MOU with prestigious university hospitals in Korea and abroad, including Chicago University Hospital, Moscow National University Hospital, and Samsung Seoul Hospital. We have also opened telemedicine centers in Almaty and Vietnam to greatly contribute to the internationalization and the improvement of human health care by attracting foreign patients. The hospital remodeling, which has been undergoing for five years, will be completed in mid-2021, along with the opening of the special ward and the central building. Thus, establishing a more pleasant and high-quality hospital infrastructure and become one of the best hospitals in Korea.

Ranked 1st place in the Busan, Ulsan and Gyeongnam region for the 2nd Patient Experience Appropriateness Evaluation by the Health Insurance Review and Evaluation Committee of the Ministry of Health and Welfare



HISTORY

- 2015** The Department of Diagnostic Medicine obtained certification for Excellent Testing Laboratory five times in a row from the U.S. Laboratory of the College of American Pathologists (CAP)
Accredited by the Busan Metropolitan Government as Leading Strategic Company (Bio Health Industry Field)
- 2016** Signed an MOU with Moscow's First National Medical University and Hospital Division
Signed an MOU with the University of Chicago and the University of Chicago Medical School
- 2017** Opened the special ward (12 floors, 44 patient rooms, 3 wards)
- 2018** Regional Cardiovascular and Cerebrovascular Disease Center obtained the highest score in Korea during the performance evaluation conducted by the Ministry of Health and Welfare
- 2019** Accredited as a top-tier general hospital medical center for the third cycle of the medical institution evaluation by the Ministry of Health and Welfare
Opened Telemedicine Center in Almaty, Kazakhstan
- 2020** Opening of the Disabled Health Care Center in Busan
Selected as telemedicine pilot project for rehabilitation patients by the Ministry of Health and Welfare
- 2021** Designated as the only cutting-edge rehabilitation medical institution in the Busan area (Yeongnam area) by the Ministry of Health and Welfare



Leading the Era of the Fourth Industrial Revolution in the 21st Century

A free and creative academic research site

The Graduate school is a place where learning and knowledge converge. The competency formed in this place develops into a core talent who will pioneer the future of Korea. Dong-A University Graduate School develops academic theories, expansive application methods, and creative exploration skills in each field to foster talents who will be in charge of the development of the world.

GRADUATE SCHOOL



5 categories

67 departments in operation

NUMBER OF LAWYERS PRODUCED BY THE DONG-A LAW SCHOOL



Over **400**



GRADUATE SCHOOL



Established in 1958, Dong-A University Graduate School continuously develops and promotes integrated education and research programs to nurture talented individuals that will take on central roles in the modern knowledge information society. Dong-A University Graduate School currently operates 67 departments in five categories and has produced more than 3,000 doctors and 9,000 masters so far.

GRADUATE SCHOOL OF INTERNATIONAL STUDIES



To foster people who play a leading role in international trade, we focus on practice-oriented education and help them understand politics, economy, society, and culture.

SCHOOL OF LAW



Dong-A University's Law School, which has produced legal professionals trusted by the people, has trained global professional lawyers based on a long tradition. Since its opening in 2009, more than 400 lawyers have been produced so far, faithfully serving as the backbone of the country and society. In addition, professional lawyers with professional knowledge and international sensibilities are working all over the world by specializing in international trade laws.

GRADUATE SCHOOL OF BUSINESS ADMINISTRATION



By researching and studying new theories and techniques on corporate management, including basic theories and practices in business management, students will be able to strengthen the competitiveness of companies. Currently, there are 9 majors and the Top Manager curriculum for the master's degree at the Graduate School of Business Administration.

GRADUATE SCHOOL OF EDUCATION



The school's objective is to train school teachers who will focus on improving the educational environment by teaching academic theories about education and utilizing their application skills. In particular, by opening night classes, the graduate school provides ongoing research opportunities for current teachers in Busan and Gyeongnam regions, opening the possibility of self-development as educators.

GRADUATE SCHOOL OF SOCIAL WELFARE



This is a Specialized Graduate School that fosters talented people who can lead the welfare development of Korea and local communities in response to Korea's political ideology that emphasizes welfare society in an aging era. After graduating from the graduate school through a solid curriculum on welfare theory and practice, all students will be qualified as second-class welfare workers and are trained to be equipped with academic and practical skills.

GRADUATE SCHOOL OF LAW ON POLICE AND REAL ESTATE



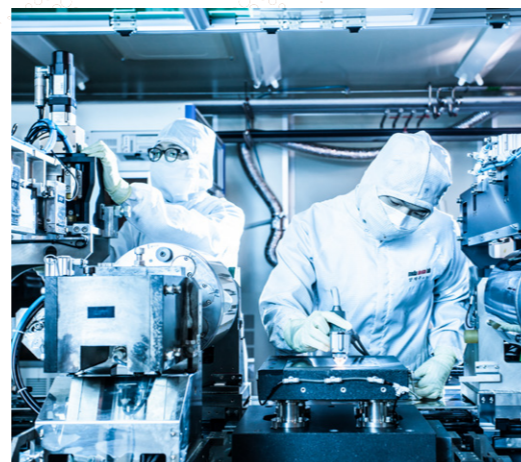
In order to foster outstanding professionals in the criminal and legal fields, we systematically research and teach established theories and applications in the police and other legal fields. We strive to foster special legal experts who combine expertise and practical skills.

GRADUATE SCHOOL



Studying academics with depth,
doing art with inspiration

Enriching life, vital life zone



Dong-A University, which has adopted the latest educational practices, established search facilities and cultural facilities for local residents to lead the global era, has continued to make endless efforts to provide conveniences until it becomes a place where dreams come to reality. We are also carrying out university specialization projects through continuous investment in education and research infrastructure. It has established with various fields such as humanities, social studies, science, art, medicine, etc. to foster professional talent.

Seokdang Museum has the greatest number of cultural assets collections and boasts of the highest level of college museum in Korea

A collection of over

30,000 pieces



AFFILIATED INSTITUTIONS



14

ANNEXE RESEARCH INSTITUTES



34

AFFILIATED INSTITUTIONS

Seokdang Museum

Seokdang Museum, which opened in 1959, is the first museum in Busan. It has the largest number of cultural assets among Korean universities and has established itself as a representative tourist attraction in Busan, with 70,000 visitors annually. In 2017, the Busan City Council applied for the Seokdang Museum building to be on the provisional list of UNESCO World Heritage Sites, recognizing its value as a global cultural heritage.

Library

Dong-A University has large-scale libraries in Seunghak, Bumin, and Gudeok Campuses and at the Law School and Medical School Library Annexes. These facilities have over 4,800 seats, over 1.3 million books, and over 730 types of serial publications published at home and abroad and 68,000 pieces of non-book materials.

Information Processing Center

It was established in 1981 so that professors can research and practice education, as well as for computerizing academic administration. It operates the entire administration of the school online through a comprehensive information system. Seunghak, Boomin, and Gudeok Campuses have about 900 PCs in total in 14 education rooms and also support lectures and free practice.

Language Education Center

Various contents and programs related to language education are established to help foreign students study and help local residents improve their language skills.

Seokdang Art Museum

Seokdang Art Museum, located at Boomin Campus, is the 6th official art museum in Busan and has become the center of local art. It is a space where local people can enjoy culture and art through active exhibition activities.

Seokdang Academy

Established in 1960, Seokdang Academy has been translating important classics such as 'Goryeosa' and 'Seohajib' and continuously publishing 'Seokdang Academy Series' to cumulate its research capabilities.

Hallim Dormitory

We provide the best environment for freshmen and students from abroad to study. It is spread throughout each campus as Seunghak Hall, Bumin Hall, and Gudeok Hall. Seunghak Hall 2 was completed in 2016 and is equipped with facilities that can accommodate a total of 2,175 students.

DAU Media Center

Founded in 1948, Dong-A University's university newsletter committee, broadcasting station, and English newspaper committee were merged to become DAU Media Center. It is divided into the University Newsletter Editorial Division and the Broadcasting Division, which provide in-depth reports on various issues in the university and quickly delivers important news to students.

Health Care Center

Health Care Center is in charge of the health care of students and staff, early detection of diseases, environmental hygiene and other health improvements in schools.

Life-long Education Center

Opened in 1993, the Life-long Education Center operates a credit banking system, a general course, and a CEO Academy to foster talents with creative leadership required by future society.

Dong-A University Confucius Academy

Confucius Institute is a non-profit educational organization established and operated by the China's National Hanban Confucius Institute Association to introduce Chinese language and culture to the world. China's Hanban is carrying out various activities to broaden the world's understanding of Chinese language and culture.

Seokdang Global House

Seokdang Global House provides various convenience facilities such as a dormitory and Korean language classrooms that can accommodate about 210 foreign students so that they can adapt to school life more easily and conveniently and focus on academic exploration.

Global Zone

Global Zone, a space for multinational cultural exchanges, offers opportunities for students to learn languages naturally by interacting with international students and native instructors from all over the world.

Student Consultation Center

Student Consultation Center is a counseling center established so that students can share various concerns experienced during their college years. We operate psychology, career, life, and sexual violence counseling rooms.

ANNEXE RESEARCH INSTITUTES

- The Institute of ASEAN Studies
- Medical Science Research Center
- Environment Research Center
- Business Research Center
- The Sports Science Research Institute
- Basic Science Research Institute
- Institute for Legal Research
- University Core Research Center for Disaster-free and Safe Ocean City Construction
- The Research Institute of Ocean Resources
- The Research Institute for Tourism and Leisure
- Industrial Technology Research Center
- Human Ecology Research Institute
- The Institute of Agricultural Life Sciences
- The Research Institute of Information Technology
- The Research Institute of Bio-Health Convergence
- The Research Institute of International Trade
- Institute of Marx Engels Studies
- The Research Institute of Convergence Design
- The Research Institute of Taekwondo and Health Culture
- The Research Institute of Bio-Food Industrialization
- The Entrepreneurship Research Institute
- The Research Institute of Energy Environment Application Technology
- The Research Institute Global Finance
- The Research Institute of Humanities
- The Research Institute of Life and Medical Ethics
- The Research Institute of Global Disaster and Safety
- The Research Institute of Vessel and Ocean Systems
- The Research Institute of Emergency Response Technology Policy
- The Research Institute of Gender and Affect
- The Research Institute of Multiculturalism
- The Research Institute of Formation Culture and Arts
- The Research Institute of Historical Humanities Image
- The Research Institute of Anti-Virus Pharmaceuticals
- Anti-cancer Immunity Research Center

CONNECT FUTURE



+ JUMP

DONG-A CONNECTS TOWARD THE FUTURE

We experience the widest stage and have the most opportunities.
We learn objective reasoning with overwhelming passion, romance,
and intense thinking.

Dong-A University students are equipped with solid skills here and
create their own future.

Dong-A! The meaning held by these two letters is endless.

Pride, courage, challenge, solidarity, love...

Each person's starting point for the future,

And the leap from Dong-A to your future begins.

Unrivaled employment support system Flying upwards! Dong-A students



JOB SUPPORT PROGRAM

Various employment support Program/competency assessment Selected as the best and outstanding university



- Selected as an outstanding case of 'employment career guidance and counseling' in the 1st cycle of certification evaluation of university institutions
- Evaluated for university basic competency diagnosis in the 2nd cycle
 - > Selected as 'Best among universities in the Southeastern Region' in terms of employment and start-up counseling and career counseling
 - > Selected as 'Outstanding university in the Southeastern Region' in the employment and start-up employment support category
- Won the Best Award in the 2019 Busan Specialized Program Workshop for Job and Start-ups
- Selected as an excellent innovation case in the 'Industry-Academy Regional Cooperation' section of the National Forum for University Innovation Support Projects in 2019

More than **1,800**

Largest scale in Korea (1,800 people per year)
Alumni working in corporations participated in the students' training

SELECTED AS 'BEST UNIVERSITY IN SOUTHEASTERN REGION'

Selected as "Best University Among the Southeastern Region Universities" in the 2018 Basic Competency Assessment in the Start-up Consultation and Career Counseling section

No. 1 in Korea, the largest scale nationwide, and long-term operation of employment clubs on a yearly for 18 years in a row

- Operation of career clubs: established and operated by the university (Operated with a professor for each club)
- Maximum number of participants nationwide: 21.7% (960 students) out of the 4,415 senior students who participated
- As of 2021, more than 50 universities nationwide, including universities in the Seoul metropolitan area, visited Dong-A University for benchmarking.
- Ranks first place in the student support (career clubs) and employment information provision section in the Dong-a Ilbo's 50 Youth Dream Universities Evaluation
- Announced as the best example of 2019 by the National Council of Employment Managers
- Reported on the front page of the national newspaper as an outstanding case of overseas college career club in 2020

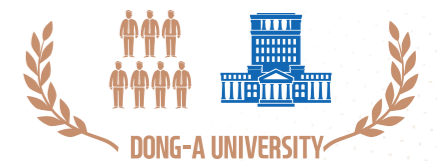
Customized employment education/consultation on a yearly basis, developed by university

- Operation motto of Career Development Division
 - > BTS: BETTER THAN STUDENTS
- Conducting employment counseling and guidance training once or twice a month
 - > Analyzing employment program status and operations
 - > Analyzing latest job information and job process - sharing know-how with alumni who are employed
 - Developing and operating program staff that befits university conditions
- BTS operation cases were reported by 12 newspapers, including the Korea Economic Daily



BTS

(BTS: BETTER THAN STUDENTS)



No. 1

Ranked No. 1 in Student Support (career club) among 50 universities in the Dong-A Ilbo's Youth Dream University Evaluation

The nation's largest scale (1,800 per year) of alumni working in corporations participated in the students' training

Establishment of a cyclical employment education system in which seniors who graduated from employment programs participate in junior education again

1 Re-participation in job / interview training

- Over 1,000 alumni who had been employed through employment programs have participated in the students' education again annually.
- Providing job training, interview training (simple interviews), and latest corporate information
- 5,500 students per year receive benefits, showing a high satisfaction rate (95-99%)

2 Re-participation in the Employment Education Fund - the only case in Korea

- More than 1,200 alumni program management funds contributed to employment program budget
- A regular donation of 10,000 to 20,000 won per month, 610 million won accumulated.
- Employment infrastructure established and re-used as program operating funds
 - ※ The first real-time online employment mentoring platform for universities was established and operated in 2019 (As of 2020, 3,200 participants)
 - ※ Ranked fifth in the field of information provision for alumni by Dong-A Ilbo in 2015
- Won the grand prize at the 2019 Busan Job & Start-up Specialized Project Presentation Contest

BEYOND Educational Innovation that nurtures the versatile talents who evolve on their own

Dong-A University has been practicing qualitative changes in future education following the Fourth Industrial Revolution, along with exploring learning and fostering talent to lead the future. We introduce a bold comprehensive training approach and realize a BEYOND educational innovation model designed to support students' customized education.



- Strengthening competency to characterize the future academic structures
- Establishment and expansion of a double-major system for micromodule selection
- D-EPI based on social competencies to foster future talent
- Innovating mass-customization educational support
- Establishment of a student-centered total care system



CONVERGENT MAJOR

INDOOR SPATIAL DESIGN

Indoor Spatial Design is a field of study that fosters talent in professional design based on a functional understanding of the characteristics of space for the purpose of creating and regenerating all daily living spaces and environment such as residential, commercial, and public spaces.

SMART HEALTH CARE

It combines the head department (Department of Management Information Systems) and three participating departments (Department of Food Science and Nutrition, Department of Pharmaceutical Life Engineering, Department of Health Management) to analyze various healthcare data and design optimized services for users and foster smart healthcare practitioners.

SELF-DESIGNED COMBINED MAJOR

Self-directed learning is a flexible major in which students interpedently set up their own career paths and design and complete curriculum accordingly to guarantee various learning opportunities and foster creative talent, so that students can design a curriculum that meets their career plans and educational purposes.

MICRO-MODULE SYSTEM

Micro-module refers to a set of minimum units of curriculum to support a particular career advancement within a department (major). In the department, students can set modules for each field of entry and select modules in the field of interest to systematically take required courses and obtain certificates.



CREATIVE HUMANITIES MANAGEMENT

COMBINED MAJOR

Based on the understanding of humanities knowledge, we aim to foster comprehensive talents with the ability to lead creative humanities management by acquiring basic knowledge in business management such as marketing, advertising, etc.

HUMANITIES CONVERGENT CONTENTS DESIGN

Based on various and abundant local cultural contents, we cultivate creative talents who can specialize in developing and distributing humanities' convergence contents that combine humanities and contents.

NORTHEAST ASIAN HUMANITIES FRONTIER

With a focus on the Northeast Asian region (Korea, China, and Japan), students develop their local studies and foreign languages (Chinese and Japanese) to the highest level. Based on this, students develop creative humanities frontiers for social advancement and creative transformation of humanities.

EDUCATION INNOVATION



Going beyond the region and heading towards the world Continuing love towards solidarity Touching hearts

In addition to learning and training, Dong-A University will take the lead in fostering warm-hearted individuals who value community, sharing, sacrifice, and help to contribute to society



Dong-A Talent Donation Volunteer Group
(2019 school year, 6th year)

18 clubs **Over 400** students active



DONG-A TALENT DONATION VOLUNTEER GROUP

Raising students' character, forming sustainable relationships between the university and the local community, and raising their interest in the underprivileged (low-income, multicultural families, the disabled, etc.) in the community

- Launched and operated a Talent Donation Volunteer Group centering on the university's first club (since 2014).
- Selected a group (club) that can contribute talent and organized it into a volunteer group.
- Field: Performance, exhibition and experience, education, effort
- Contents: Music (instruments, songs, pungmul, etc.), dance, magic, sports activities, art, science, art exhibitions (photos, cartoons, etc.), improvement of the residential environment, painting murals, etc.

CLEAN DONG-A VOLUNTEER GROUP

Increasing the interest of the members through campus cleaning activities and campaigns, promoting love for the university

- Increased accessibility to student volunteering through the development of volunteer activities in the university since 2018 (first term)
- Cleaning the university environment, recycling, waste collection, bulletin board organization, etc.
- Awareness improvement campaign: Smoking etiquette, practicing recycling of disposable cups in everyday life, etc.



OVERSEAS VOLUNTEER GROUP

Training global youth leaders through overseas volunteer activities, cultivating volunteer spirit, and increasing cooperation through group activities.

- Content: Educational volunteer work (art, music, etc.), major-linked volunteer work (sanitation, Taekwondo education, etc.), effort volunteer work (mural painting, building/facilities painting, creating rest/ amusement facilities, etc.), cultural exchange (K-POP dance, traditional games, etc.)
- Countries: Vietnam (2015), Cambodia (2016), The Philippines (2017-19)

STUDENT MENTORING PROGRAM

Reducing the burden of tuition/living expenses for students through scholarships

- University Students' Youth Education Support Project
- Mentoring multicultural and North Korean defector students
- University Students' Talent Volunteer Camp
- Seogu student mentoring

Eight out of ten scholarship recipients
More diverse benefits for more Dong-A University students

DONG-A SCHOLARSHIP



Maximum total amount of scholarships paid in Busan, Seoul, and Gyeongsang Province

59.5 billion won



Percentage of scholarship received out of all enrolled students (15,709 out of 17,980 students received scholarships)

87%



Scholarship payment per student (annual)

3.31 million won



3 scholarships per student (17,980 students, 54,047 total cases)

3 PER STUDENT

(based on 2020 University Notification)



Scholarship of Excellence for Freshmen

Dong-A Special Scholarship, Top Student in College Scholarship, etc.

- Full tuition every semester
- Support for monthly book purchase costs
- Provides opportunities for short-term overseas language training

Scholarship for the first successful applicants for regular admission

- Half of tuition fees for each semester if students scored within the top 50% of the admission performance by each department.

[* See Scholarship Rules and Guidelines for details]

University scholarship for enrolled students

- Dong-A Hope Scholarship (Students with financial difficulties)
- Excellent Academic Performance Scholarship
- Undergraduate Education Help Scholarship (Work scholarship)
- Various scholarship funding, etc. for departments



National Scholarship Project

Local Talent Scholarship

- Full tuition (for 1 or 4 years)

Excellent Scholarship Project

- Humanities 100 years, Science and Engineering, and Arts and Sports Vision Scholarships
- Full tuition (for 2 or 4 years) and academic incentives (for those applicable)

Support project for low-income families

- National scholarships for Type I and Type II: Partial tuition fees provided to students within 8 sections of the income bracket
- National Work Scholarship Project (Work scholarship)

External scholarships

- A number of foundations' scholarships that are only granted to students enrolled at Dong-A University
 - > Dong-A Cultural Foundation, Dong-A Scholarship, Hyangmun Scholarship, etc.
 - > Department scholarship foundations such as Seobong Scholarship Foundation, Hanwon Scholarship Foundation, etc.
- Other scholarship foundations
 - > 150 scholarship foundations, including the Agricultural and Fishing Village Hope Foundation, Lotte Hope Foundation, Songwon Cultural Foundation, Asan Social Welfare Foundation, Jeongsu Scholarship Foundation, Cheongchon Scholarship Foundation, Hyeopseong Cultural Foundation, BNK Financial Group Hope Sharing Foundation, etc.



A Global Era, Academic Exchange Network Platform for 307 institutions in 35 countries

Global University Leading the 21st Century

The first step toward becoming a globally prestigious university is to understand the prestigious universities in the world.

Dong-A University has signed agreements with 307 universities, institutions, and research institutes in 35 countries around the world to establish a solid academic network in preparation for the globalization era.

In addition, we signed MOUs with leading overseas educational institutions to strengthen our international capabilities and are actively attracting international students under the slogan "Dynamic Dong-A Inbound." We will establish a differentiated internationalization program for Dong-A University by reviewing the case of joint degree programs and convergent curriculum with overseas universities.

1,061 students
Attracted foreign students

35
Countries

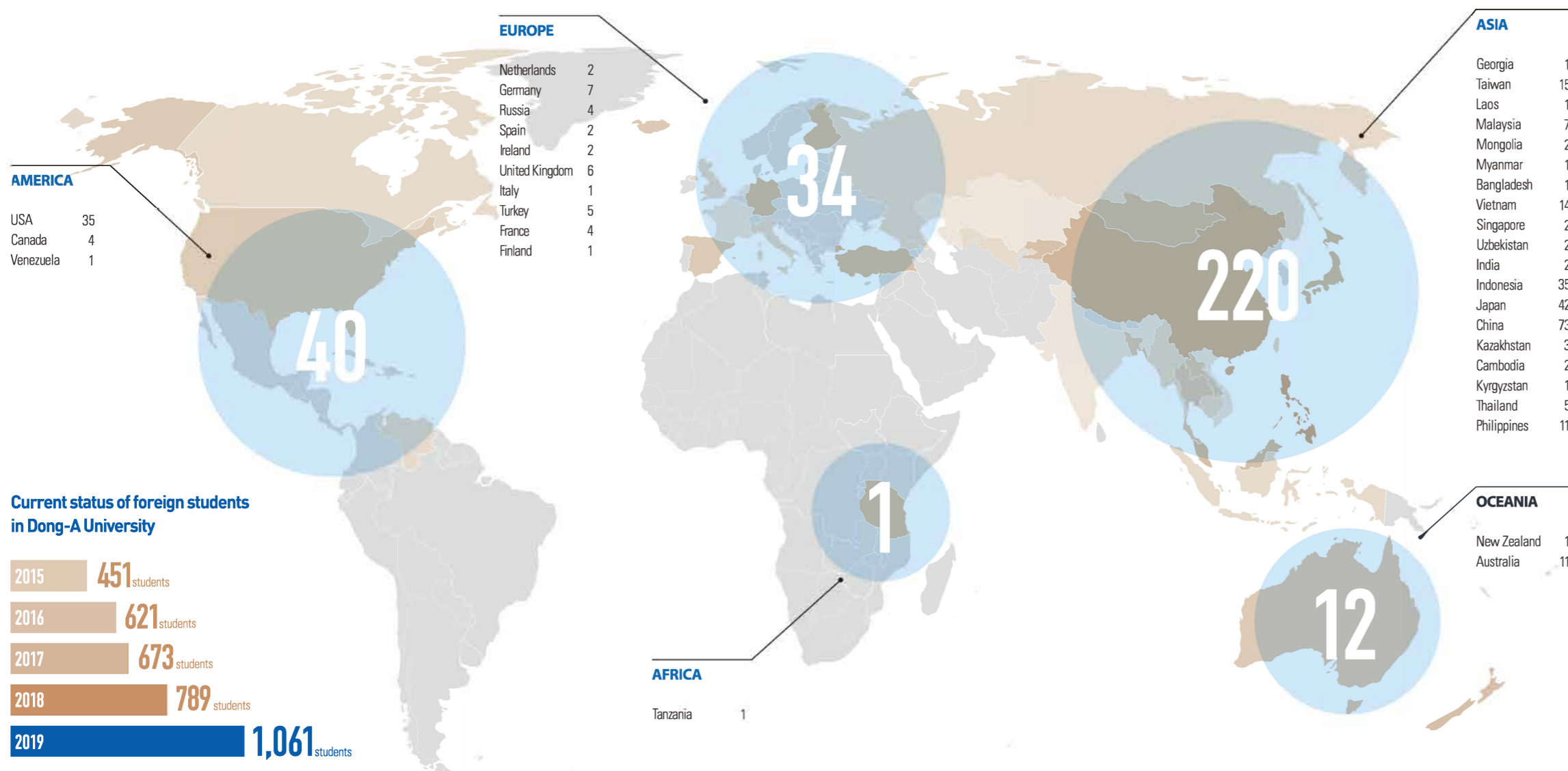
307
Institution networks

International Education
Quality Assurance
System (IEQAS)
Certified University

IBM
(Department of Integrated
Business Management)
All lectures in English,
credits recognized for field Trip

**LANGUAGE STUDY
PROGRAM CURRICULUM**
Providing various mathematics
courses for foreign students

GLOBAL DONG-A



Strengthening students' global competence

- Enhancing internationalization capabilities through exchanges between domestic and foreign students
DAILY (Integrated Supporters for Foreign Students)
- Improving mutual understanding of culture through exchanges between domestic and foreign students
Cultural exploration and learning and settlement support program (always in operation)
- Same-age student group mentoring programs
Global Win-Win (academic tutoring, major studies)
- A local community moving beyond nationality to become one with the university
Dong-A Donghwa (Volunteer for the translation of fairy tale books for multicultural families)

International Exchange Program

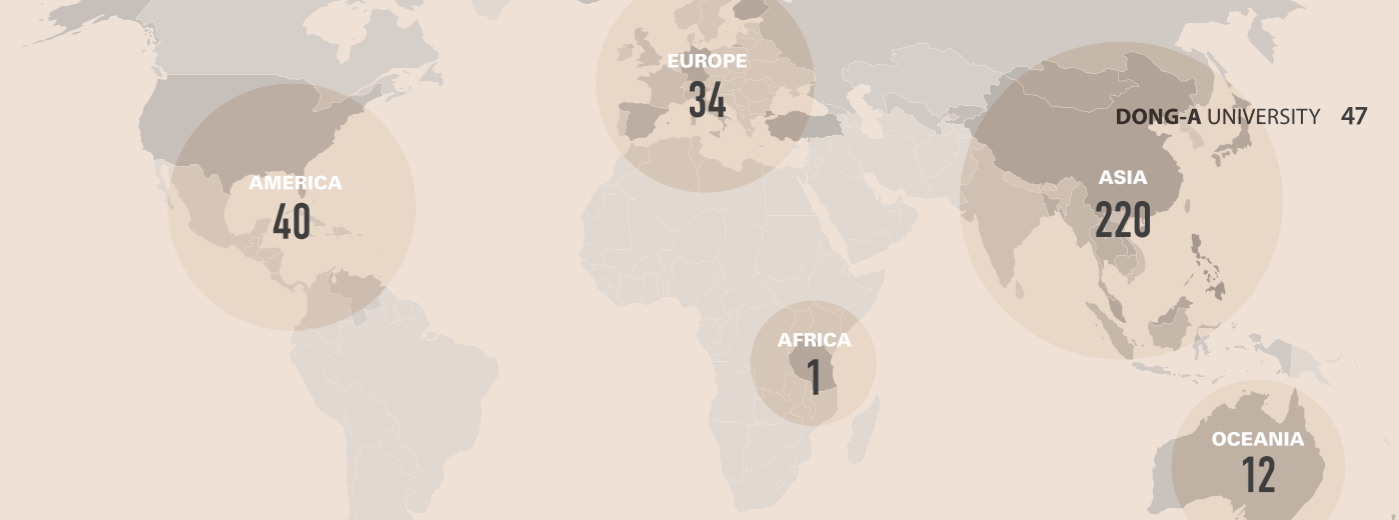
- **Student Exchange**
Studying with local university students at the overseas sister school of Dong-A University and obtaining credits from the sister school and Dong-A University
- **Joint Degree**
After taking one or two years of classes at the overseas sister school, that school's students can obtain a degree from Dong-A University and the sister school.
- **Short-term Language Training**
Completion of three to six weeks of language training programs at overseas sister schools during summer and winter vacation.
- **Korean Summer Session(K.S.S.)**
During the summer vacation, students from overseas sister schools are invited to conduct cultural exchanges for two weeks with the students from Dong-A University serving as staff
- **Online Exchange (Dong-A International Virtual Exchange (D.I.V.E.) program**
By completing online classes operated by overseas sister schools of Dong-A University in Korea, students can participate as exchange students in short-term language training programs without actually going overseas

Approximately
750 students dispatched from **16** countries

GLOBAL EXCHANGE INSTITUTION

Signed agreements with 307 universities, institutions and research institutes in 35 countries around the world
Established a solid academic network for the globalization era

Academic Collaboration Partners



AMERICA

USA

- Angelo State University
- Ball State University
- Baylor College of Medicine
- California State Univ. Fresno
- Chicago State University
- Dept. of Hospitality Management, San Francisco State Univ.
- Eastern Michigan University
- Hawaii English Language Program at the University of Hawaii, Manoa
- Hawaii Pacific University
- Illinois Institute of Technology
- Kean University
- Lander University
- Metropolitan State University of Denver
- Northeast Asian Economic Forum
- Southwestern Oklahoma State University
- Texas Medical Science Foundation and Houston Medical Institute
- The Univ. of Washington College of Engineering
- The University of Dallas at Texas
- The University of North Carolina, Pembroke
- The University of Pennsylvania English Language Programs
- The University of Tennessee
- Tourism Industry Institute, Univ. of Houston
- University of Arts
- University of California Berkeley, Summer Session
- University of California, Davis
- University of California-San Diego Extension
- University of Houston
- University of Missouri-Columbia
- University of Nebraska at Kearney
- University of Nebraska at Omaha
- University of North Carolina-Greensboro
- University of North Carolina-Wilmington
- West Virginia University
- Western Carolina University
- Western Michigan University

Venezuela

- Universidad de Oriente

Canada

- Algoma University
- Lakehead University
- Thompson Rivers University
- University of Victoria

ASIA

Georgia

- ICARUS College

Taiwan

- Chinese Culture University
- Chung Hua University
- Fen Jen Catholic University
- Feng Chia University
- Hsingwu University
- Ling Tung University
- Mingchuan University
- National Chengchi University
- National Chung Cheng University
- National Chung Hsing University

- National Donghwa University
- National Kaohsiung Normal University
- National Taipei University of Business Taiwan
- National Taiwan Normal University
- Soochow University

Laos

- Souphanouvong University

Malaysia

- HELP University
- International Islamic University Malaysia
- Sunway University
- Taylor's University
- University College Sedaya International
- University of Kuala Lumpur(UniKL)
- University of Malaya

Mongolia

- Mongolian State University of Education
- Mongolian University of Science and Technology

Myanmar

- Yangon Technological University

Bangladesh

- Daffodil International University

Vietnam

- Binh Duong University
- Duy Tan University
- Hanoi University of Industry
- Hanoi University of Technology
- Ho Chi Minh City University of Education
- Korea-Vietnam Friendship IT College, Ho Chi Minh City
- National Economics University
- Puong Dong University
- University of Minnesota, Vietnam Center
- University of Science and Technology of Hanoi
- University of Technical Education, Ho Chi Minh City
- Vietnam Academy of Social Sciences
- Vietnam National University - Ho Chi Minh City
- Vietnam National University of Science, Hanoi

Singapore

- Nanyang Polytechnic
- Nanyang Technological University

Uzbekistan

- Tashkent State Pedagogical University named after Nizami
- Uzbekistan State World Languages University

India

- KIIT University
- National Institute of Technology Calicut
- University of Calcutta

Indonesia

- Atma Jaya Catholic University of Indonesia
- BINUS University
- Indonesian Computer University
- Institute of Transportation & Logistics Management of Trisakti
- International Women University
- Pasundan University
- Polytechnic Harapan Bersama
- Polytechnic Piksi Input Serang

- President University
- Shipbuilding Institute of Polytechnic Surabaya
- State University of Surabaya
- Stie Ekuitas
- Stmik Bani Saleh
- Stmik Widya Utama
- Trisakti Institute of Tourism
- Trisakti School of Management
- Universitas Ahmad Dahlan
- Universitas Airlangga
- Universitas Internasional Batam
- Universitas Muhammadiyah Malang
- Universitas Muhammadiyah Surakarta
- Universitas Muhammadiyah Yogyakarta
- Universitas Padjadjaran
- Universitas Pendidikan Indonesia
- Universitas Telkom
- Universiti Islam Indonesia
- University of 17 August 1945 Semarang
- University of Diponegoro
- University of Indonesia
- University of Lambung Mangkurat
- University of Mercu Buana
- University of Muhammadiyah Jakarta
- University of Muhammadiyah Prof. Dr. Hamka
- University of Muhammadiyah Purwokerto
- Widyatama University

Japan

- 24 Universities in Busan and Fukuoka
- Aichi Shukutoku University
- Chikushi Women's University
- Daido University
- Fukuoka University
- Fukuoka Women's University
- Himeji Institute of Technology
- Iwate University Center for Cooperative Research and Development
- Kanazawa Seiry University
- Kanazawa University
- Kansai University
- Kobe Asahi Hospital
- Kobe Gakuin University
- Kobe University (Graduate School of Medicine)
- Kumamoto University
- Kyushu Institute of Technology
- Kyushu International University
- Kyushu Sangyo University
- Kyushu University
- Meijo University
- Musasino University
- Nagoya University Graduate School of Bioagricultural Sciences
- Nara Gakuin University
- North Asia University
- Okayama University Faculty of Agriculture
- Osaka University(Graduate School of Engineering Science)
- Ritsumeikan Asia Pacific University
- Ritsumeikan University
- Ryukoku University
- Sapporo Gakuin University
- Siebold University of Nagasaki
- Tama Art University
- Teikyo University
- Tokushima University Archaeological Heritage Management Office
- Umemura Educational Institutions
- University of East-Asia

- University of Fukui Faculty of Engineering
- University of Hyogo
- University of Marketing and Distribution Sciences
- University of Tsukuba College of Social Sciences
- Waseda University
- Yokohama National University

China

- Baoji University of Arts and Sciences
- Beijing Forestry University
- Beijing International Studies University
- Beijing Language and Culture University
- Capital University of Economics and Business
- Center for Southern Asian Studies, Peking University
- Chongqing Technology and Business University
- Dalian Maple Leaf College of Technology
- Dalian University of Foreign Languages
- Dalian University, Physical Education College
- Donghua University
- East China University of Science & Technology
- Fudan University
- Gansu Province
- Guangzhou City Construction College
- Harbin University of Commerce
- Henan University
- Huaibei Normal University
- Huazhong Agricultural University
- Inner Mongolia University of Science and Technology
- Institute for Tourism Studies
- Jiamusi University
- Jiangnan University
- Jiangsu Provincial Academy of Social Sciences
- Jilin College of the Arts
- Jinan University
- Jiujiang University
- Lanzhou University
- Mudanjiang Normal University
- Northeast Normal University
- Ocean University of China
- Qingdao Agricultural University
- Qufu Normal University
- Renmin University of China
- Security and Environmental Engineering Department, Jixi University
- Shaanxi Polytechnic Institute
- Shaanxi Radio & Television University(Shaanxi Business College)
- Shandong Economic University
- Shandong University
- Shandong University at Weihai
- Shandong Vocational College of Light Industry
- Shanghai Medical University
- Shanghai Ocean University
- Shanxi University
- Shenyang Pharmaceutical University
- Shenzhen University
- Sichuan Normal University
- Sichuan University
- South China Agricultural University
- Southwest University
- Southwest University of Political Science and Law
- Tianjin Institute of Physical Education
- Tourism Research Institute, Hangzhou University
- Tsinghua University
- United International College
- Weinan Normal University

- Xi'an Fanyi University
- Xi'an International University
- Xianyang Normal University
- Yanbian University
- Yanbian University of Science and Technology
- Zhengzhou University
- Zibo Vocational Institute
- Dalian Translation and Interpretation College
- Shanxi Science and Technology College for Further Education
- Yangzhou Hospitality Institute
- Zhongshi Korean International School
- Medical College, Zhejiang University
- Chongqing College of Electronic Engineering
- The National Leading Group for Teaching Chinese as a Foreign Language (Confucius Institute)
- Haidu College, Qingdao Agricultural University
- Qingdao Medical College

Kazakhstan

- Kazakh Institute of Physical Education
- Kazakh Leading Academy of Architecture and Civil Engineering
- M. Narikbayev Kazguu University

Cambodia

- Cambodian University for Specialties
- Royal University of Phnom Penh

Kyrgyzstan

- Osh State University

Thailand

- Asian Institute of Technology
- Chulalongkorn University
- Kasetsart University
- King Mongkut's University of Technology

Philippines

- Ateneo de Manila University
- Colegio San Agustin-Bacolod
- Malayan Colleges Laguna
- Mapua Institute of Technology
- Our Lady of Fatima University
- University of Baguio
- University of St. La Salle
- University of the Philippines
- University of the Philippines Diliman
- University of the Philippines Manila
- University of San Jose-Recoletos

AFRICA

Tanzania

- University of Dar es Salaam

OCEANIA

New Zealand

- University of Auckland English Language Academy

Australia

- Cooperative Research Centre for Tourism, Murdoch University
- Curtin University
- Griffith University
- La Trobe University

- Macquarie University
- Monash University
- Queensland University of Technology
- Swinburne University of Technology
- The University of Queensland
- University of Sunshine Coast
- University of Western Australia

EUROPE

Netherlands

- C Concept Design
- Tilburg University

Germany

- Friedrich-Alexander University, Bussan Campus
- Friedrich-Alexander University-Nerberg
- Hanns-Seidel Stiftung
- Ludwig-Maximilians-Universität München
- Rheinisch-Westfälische Technische Hochschule Aachen
- University of Applied Sciences of Zwickau
- University of Bonn

Russia

- Far Eastern National University
- Novgorod State University
- Southern Federal University
- Vladivostok State University of Economics and Services

Spain

- University of Malaga
- Universidade de Santiago de Compostela

Ireland

- Institute of Technology, Carlow
- Swan Training Institute

United Kingdom

- Anglia Ruskin University
- Middlesex University
- The University of Liverpool
- University of East London
- University of Hertfordshire
- University of Wales, Institute of Cardiff

Italy

- University of Messina

Turkey

- Abdullah Gul University
- Dokuz Eylul University
- Fatih University
- Istanbul Kultur University
- Istanbul Technical University

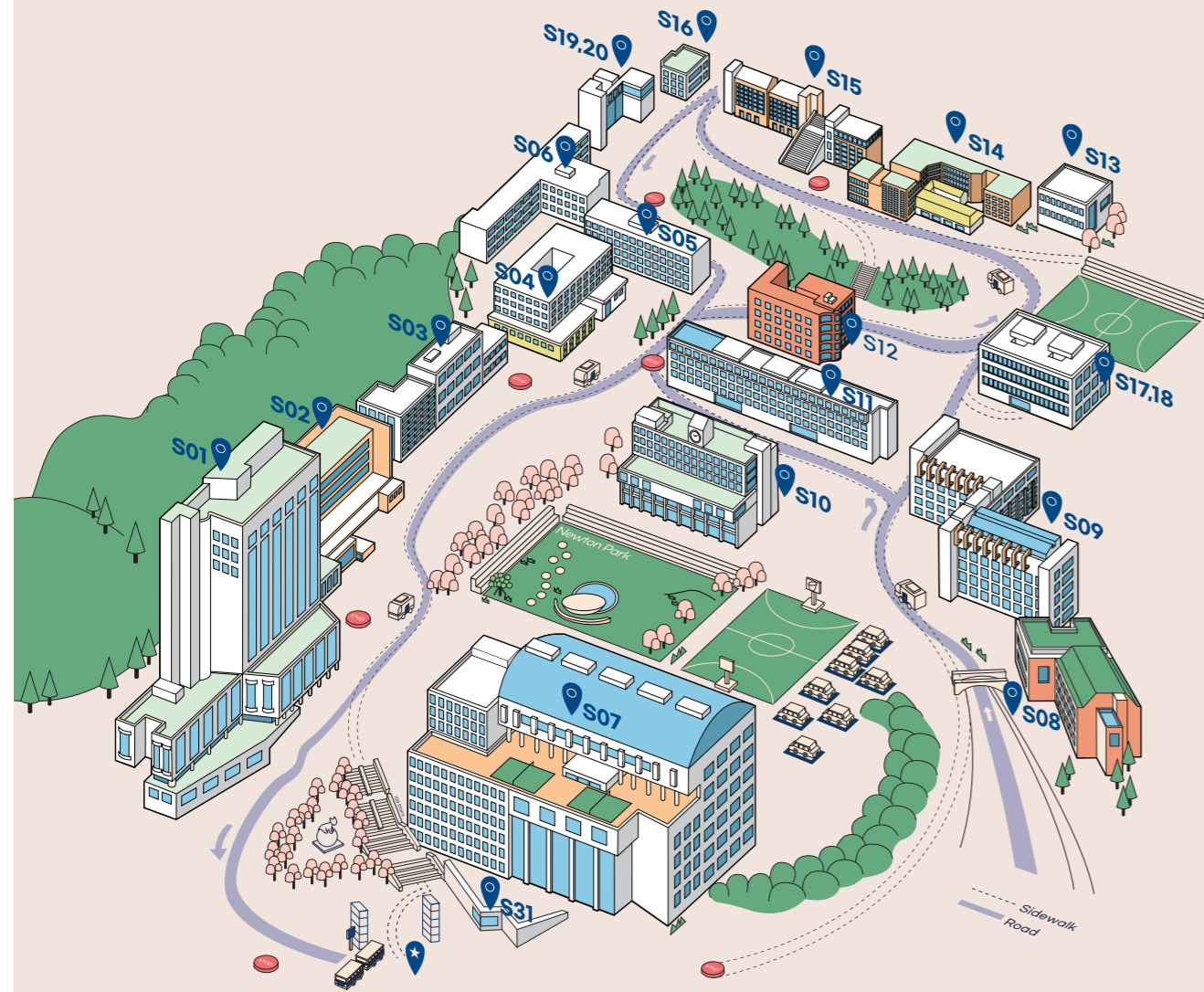
France

- Ecole des Arts Decoratifs de Strasbourg
- Ecole supérieure de art et design Grenoble-Valence
- Université D'Angers
- Université Paris I Pantheon Sorbonne

Finland

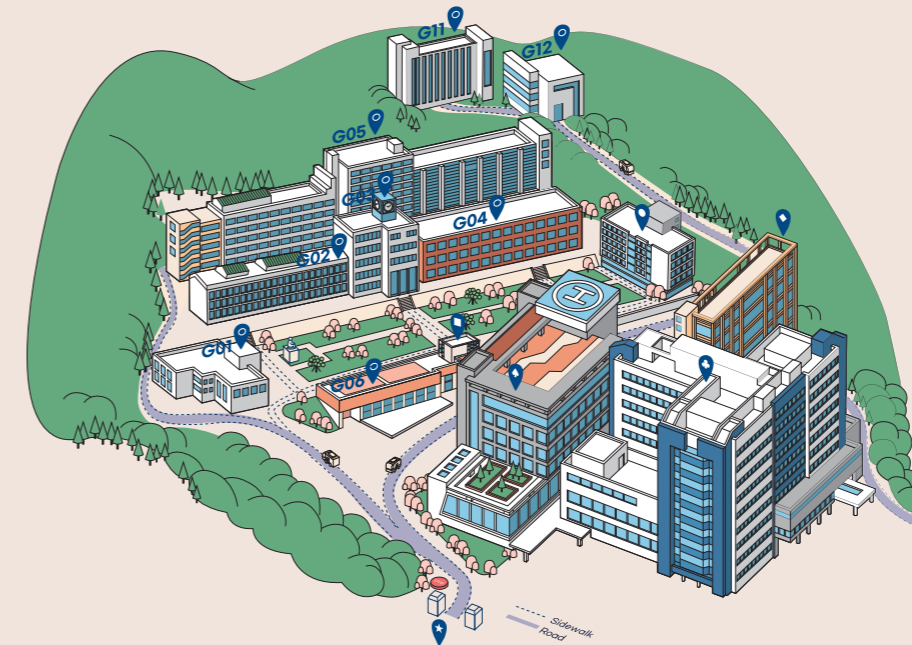
- Asia Exchange

SEUNGHAK CAMPUS



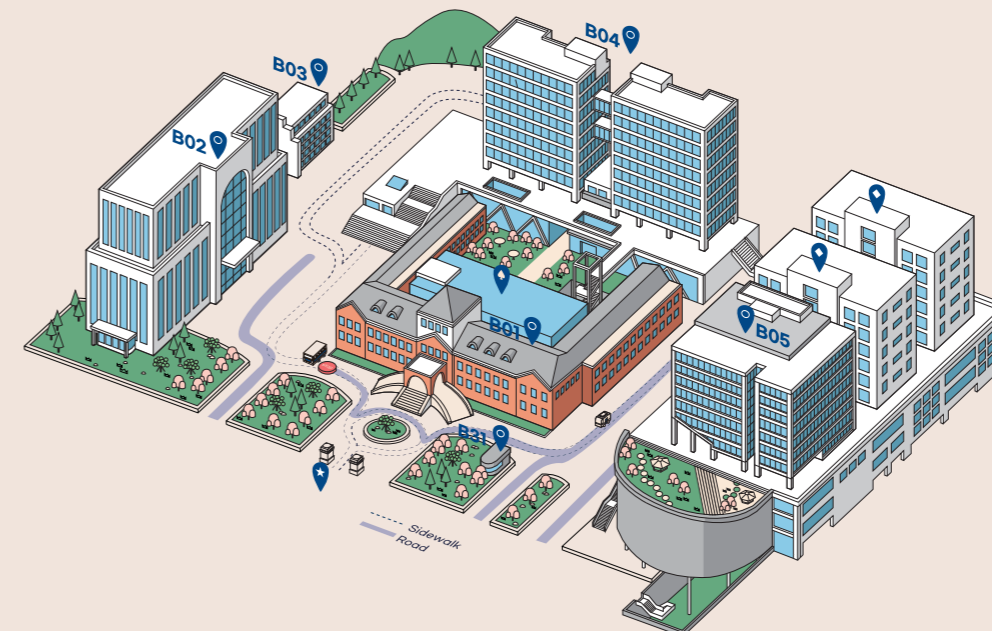
- | | | |
|---|---|---|
| S01 University Main Hall and College of Humanities (A) | S08 Faculty Hall (W) | S15 Hallim Dormitory Seunghak Hall 1 |
| S02 Student Hall (Q) | S09 College of Natural Resources and Life Science and College of Health Sciences | S16 Student Army Training Corps (DE) |
| S03 College of Engineering Building 1 (P1) | S10 Hallim Library (B) | S17 College of Arts and Sports Hall 2 |
| S04 College of Engineering Building 2 (P2) | S11 College of Natural Sciences (E) | S18 College of Arts and Sports Practice Hall |
| S05 College of Engineering Building 3 (P3) | S12 College of Engineering Building 4 (P4) | S19, 20 Hallim Dormitory Seunghak Hall 2 |
| S06 College of Engineering Building 5 (RS) | S13 Entrepreneurship Hall | S31 Security Guard Office |
| S07 College of Arts and Sports Hall 1 | S14 Industry-Academy Hall (SM) | ★ Main Gate |

GUDEOK CAMPUS



- | |
|---|
| G01 Seokdang Memorial Hall (GE) |
| G02 College of Medicine Lecture Hall (S1) |
| G03 College of Medicine (S2) |
| G04 Education Hall |
| G05 Gudeok Lecture Halls 1, 2 (GA) |
| G06 Research Hall |
| G11 Formerly College of Arts |
| G12 Formerly College of Arts Practice Hall |
| ♣ Dong-A University Hospital (Main Building) |
| ♠ Dong-A University Hospital (West Building) |
| ◆ Dong-A University Hospital (East Building) |
| ■ Dong-A University Hospital (Central Building) |
| ● Dong-A University Daesin Intermediate Care Hospital |
| ★ Main Gate |

BUMIN CAMPUS



- | |
|---|
| B01 Seokdang Museum (BM) |
| B02 School of Law (LS) |
| B03 Life-long Education Center (BE) |
| B04 General Lecture Building (BA-BD) |
| B05 International Hall |
| B31 Security Guard's Office |
| ♠ Seokdang Art Museum |
| ◆ Hallim Dormitory Bumjin Hall |
| ★ Main Gate |